



2023

# RECYCLOPEDIA

## Contents

- Using your Collection Carts . . . . . 3
- Refuse Collection . . . . . 5
- Recycling Collection . . . . . 7
- What to Put in the Green Recycling Cart . . . . . 9
- Large Item Collection Guidelines . . . . . 11
- Electronics Recycling . . . . . 14
- Brush Collection . . . . . 15
- Brush Processing Center . . . . . 16
- Leaf, Yard, and Garden Waste Collection . . . . . 17
- Drop-Off Sites . . . . . 19
- Urban Forestry . . . . . 21
- Moving Days . . . . . 23
- Stop Food Waste . . . . . 24
- Winter Information . . . . . 25
- Disposal and Recycling Guide . . . . . 26
- Streets Division Information . . . . . 32

## STAY INFORMED

Services described in this book may change over time. The Streets Division's website will have the most current information. Residents are encouraged to sign up to receive News Releases and other communications from the City of Madison at [www.cityofmadison.com](http://www.cityofmadison.com). And, be sure to follow the City of Madison on your social media platforms.

## TELEVISIONS, COMPUTERS, MONITORS & LAPTOPS FREE TO RECYCLE

For 2023, televisions, computers, monitors, and laptops will be free to recycle for City of Madison residents.

You must take these items, and other electronics, to the drop-off sites. No work orders are necessary for these items.

This change in longstanding procedure is thanks due to changes in the electronics recycling marketplace that allow this to occur on a temporary basis.

## WHO TO CONTACT

### Curbside Collection, Drop-Off Sites, Street Sweeping, Pothole Repair, and Snow Plowing Issues

- |  |  |
|--|--|
| For areas <b>east</b> of South Park Street:      | For areas <b>west</b> of South Park Street:      |
| » Streets East: 4602 Sycamore Ave., 608-246-4532 | » Streets West: 1501 W. Badger Rd., 608-266-4681 |
| » Office hours: 7:30am–4:00pm, Monday to Friday  | » Office hours: 7:30am–4:00pm, Monday to Friday  |

- For recycling information:
- » Recycling Coordinator: 1501 W. Badger Rd., 608-267-2626
  - » Office hours: 7:30am–4:00pm, Monday to Friday

### Urban Forestry Issues

- » Urban Forestry: 1402 Wingra Creek Parkway, 608-266-4816
- » Office hours: 7:00am–3:00pm, Monday to Friday
- » Website: [www.cityofmadison.com/forestry](http://www.cityofmadison.com/forestry)
- » After-hours tree emergency: 608-255-2345 (Madison Police Non-Emergency Line)

### Mulch and Brush Processing

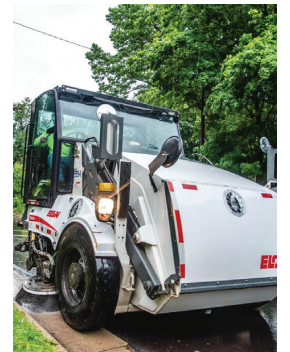
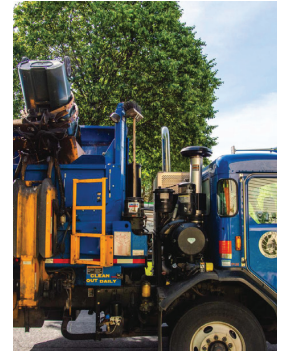
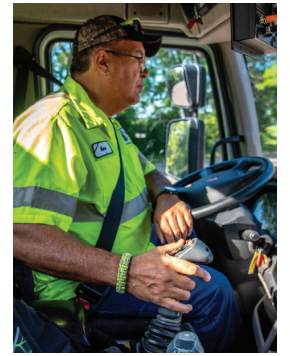
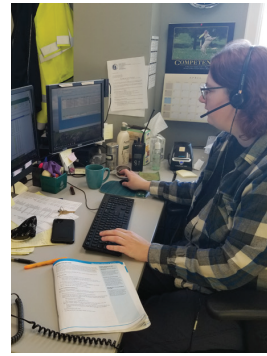
- » Brush Processing Center: 121 E. Olin Ave., 608-266-4911
- » Hours of operation: 7:30am–2:30pm, Monday to Friday

### Hotlines

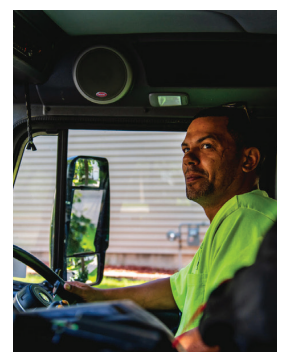
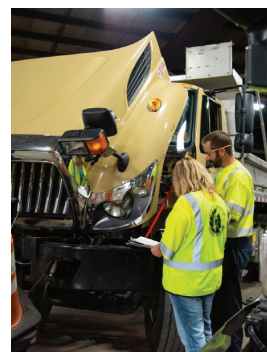
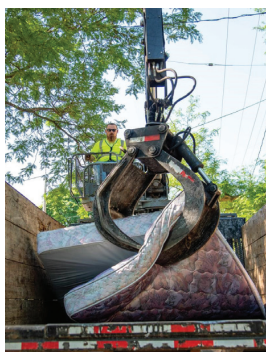
- » Brush & Yard Waste: 608-267-2088
- » Winter Parking: 608-261-9111
- » Special Charges: 608-243-5899

### Online

- » Report problems: [www.cityofmadison.com/reportaproblem](http://www.cityofmadison.com/reportaproblem)
- » [www.cityofmadison.com/streets](http://www.cityofmadison.com/streets)
- » Email: [streets@cityofmadison.com](mailto:streets@cityofmadison.com)



**Streets Division**  
Public Works Department  
City of Madison, Wisconsin



## USING YOUR COLLECTION CARTS

These guidelines are for all collection carts provided by the City for curbside collection.

- » Use correct cart for the items.
  - What goes into the recycling cart? Turn to [page 7](#).
  - What goes into the refuse cart? Turn to [page 5](#).
- » Place the correct carts curbside on collection day.
  - Download your collection schedule at: [www.cityofmadison.com/collectionschedule](http://www.cityofmadison.com/collectionschedule).
  - Or contact the Streets Division office that services your home.
- » Follow these rules to have your cart collected on their scheduled day:
  - Place carts out for pickup by 6:30am.
  - Close cart lids. Nothing should stick out more than 18 inches from the top of the cart.
  - Do not put more than 100 pounds of material in your cart.

### Collection Cart Storage

- » After carts have been emptied, residents have 24 hours from the day of collection to remove them from the curb.
- » Carts should be stored in the garage, or at the rear of the building.



*Recycling and refuse cart ready for collection and following the guidelines.*

## HOLIDAY COLLECTIONS

The Streets Division will not perform curbside collections on the following days. The drop-off sites and offices will also be closed. Use your [collection schedule](#) to see how the holidays effect your trash and recycling pickup.

- New Year's Day
- Martin Luther King, Jr. Day
- Memorial Day
- Juneteenth (June 19)
- Independence Day (4th of July)
- Labor Day
- Thanksgiving
- Friday after Thanksgiving Day
- Christmas Eve
- Christmas Day
- New Year's Eve

## WHAT IS THE TERRACE?

It's the grassy space between the sidewalk and curb. This strip is public right-of-way land. While homeowners maintain it, this space is technically City property. In fact, all homes, even ones without sidewalk, have right-of-way space along the street.

Use the right-of-way space, or terrace, to place your collection carts, to pile your leaves & brush, to place large items, and more. The Streets Division advises against using this space for gardening or decoration so they do not become damaged during city operations.

## DIRTY CARTS

Residents are responsible for cleaning their collection carts. Carts will not be exchanged because they are dirty or have an odor.

## MISSED COLLECTION?

Contact the Streets Division office that services your home so a truck can be sent back to collect the stop that was missed.

The best method to report a missed stop is filling out the Recycling Collection or Refuse Collection report-a-problem form. The form is available at [www.cityofmadison.com/ReportAProblem](http://www.cityofmadison.com/ReportAProblem).

## WHO PICKS UP YOUR RECYCLING?

Did you know that some areas of Madison are collected by private companies? If you don't know who collects your recycling or refuse, check the cart at your home. The carts will either have the City of Madison logo and information, or the logo of the company that provides the collection.

## STAY INFORMED

Services described in this book may change over time. The Streets Division's website will have the most current information. Residents are encouraged to sign up to receive News Releases and other communications from the City of Madison at [www.cityofmadison.com](http://www.cityofmadison.com). And, be sure to follow the City of Madison on your social media platforms.

## Cart Exchanges, Repairs, and Purchases

- » Residents can request a larger or smaller cart at no charge. Contact the Streets Division office that services your home, or use [www.cityofmadison.com/reportaproblem](http://www.cityofmadison.com/reportaproblem).
- » Missing or damaged carts can be replaced or repaired. Depending on the situation, residents may need to purchase a replacement. Contact a Streets Division office for more information.
- » Residents who need an additional cart or carts can also purchase them.

## How to Place Your Cart for Collection

Improperly placed carts may not be collected.

- » Place carts in your driveway, terrace, or driveway apron at the road edge—not in the street.
  - Do not place carts in the street along the curb unless absolutely necessary. Carts in the curb/gutter line interfere with street sweeping, snow plowing, and traffic. In stormy weather, carts in the street gutter roll away.
- » Face the white serial numbers on the cart toward the road.
- » Position carts side by side with four feet of space between them.
- » Keep carts four feet away from obstructions, like mailboxes, trees, street signs, etc.

*Special Note: If you live in a Clean Streets/Clean Lakes zone, do not place your carts in the street along the curb during scheduled sweeping times.*

## How to Place Your Cart for Winter Collection

- » Use your driveway apron or driveway after it has been cleared of snow.
  - Or use a cleared area of your terrace or road edge.
- » Do not place carts on top of snow banks.
- » After your street has been plowed, carts can be placed in the gutter immediately next to the driveway apron. If you put your cart in the gutter before the street has been plowed, large sections of your street will not be plowed as trucks will need to drive around the carts.

## How to Place Your Cart for Alley Collection

- » Carts must be at the alley edge.
- » Carts on private property will not be collected.

## Collection Carts are City Property

Each residence that is eligible for Streets Division services is entitled to one trash cart and one recycling cart provided by the City. They are provided at no additional cost as they are city property. When you move, leave the city-supplied carts at the home. Your new residence should have collection carts, and if it does not, contact us to set up delivery.

If the homeowner purchased additional carts from the Streets Division, those extra carts they purchased can be moved to the new property.

## REFUSE COLLECTION

### Collection Basics

- » Tan trash cart collected weekly on your scheduled collection day.
- » Get your collection schedule at [www.cityofmadison.com/CollectionSchedule](http://www.cityofmadison.com/CollectionSchedule) or contact the Streets Division office that services your home.
- » Follow all cart usage guidelines found on [page 3](#).

### Use the Cart for more than Bagged Trash

The tan cart should be used for any item going to the landfill that can fit inside it. Items that are small enough to fit into the trash cart will not be picked up as large item collection. Bulky toys, car seats, plastic shelving units, small pieces of wood, and disassembled furniture are all examples of the smaller items that can go into the tan cart. For more information about large items, turn to [page 11](#).

### Special Handling Instructions for Refuse Items

- » **Dog/cat waste**  
Bag it and place into the tan trash cart at your home. Do not place into public litter containers.
- » **Ashes, sawdust, vacuum cleaning dust, etc.**  
Bag it. Be certain ashes are cool before placing into trash.
- » **Deer carcasses**  
Double bag them.
- » **Latex paint**  
If it is completely dried solid, it can go into the trash. Liquid paints and all non-latex paints must go to Dane County Clean Sweep.



*Rosie the Rubbisher is the name of the electric trash compactor at our Sycamore drop-off site.*

### BUILDING MATERIAL

- Debris created by contractors will not be collected. Curbside collection is for minor home projects performed by residents.
- The maximum amount that will be collected at one time is 240 pounds, or the equivalent of six 30-gallon containers that do not weigh more than 40 pounds apiece.
- The Tan Refuse cart can also be used. Be sure to follow all cart usage rules as outlined on [page 6](#).

### What is "building material"?

- Lumber, drywall, tile, and other similar construction debris
- Shingles will not be collected by the Streets Division. Shingles must be hauled to a shingle recycler.

### Recycling Building Material

The Dane County Department of Waste and Renewables has a construction and demolition recycling facility at 7102 US Highway 12. This is open to homeowners and contractors.

For more details, visit the Dane County website, [landfill.countyofdane.com](http://landfill.countyofdane.com) or call them at 608-838-9555.

### Special Building Material Considerations

- All projects with a value of \$20,000 or more are required by ordinance to recycle the building material debris.
- Other major projects such as new construction and demolitions require recycling as well. Visit the Construction and Demolition page of the Streets Division website for more information or contact the Planning Department at 608-266-4635.

## MORE TRASH THAN FITS IN THE CART?

Excess bags of trash will be collected for two consecutive weeks only, or at the discretion of Streets Division staff.

In order to have the excess collected, you must also follow these guidelines:

- Cart must be full and you have 6 or more bags of extra trash outside of the tan cart.
- Debris small enough to be bagged must be.
  - Do not place trash into cardboard boxes.
- Bags should weigh less than 40 pounds apiece.

## CONSIDER A DUMPSTER

If you are performing a large cleanup that will generate a significant amount of trash, consider renting a dumpster from a private waste hauler.

## MORE WAYS TO HANDLE EXCESS TRASH

- Exchange your trash cart for a larger size.
- Check with your neighbor to see if they will allow you to put the excess into their cart.
- Take it to a drop-off site.
- Hold it until the next collection day.
- Purchase an additional cart from the Streets Division.
- Change your habits to make less waste.

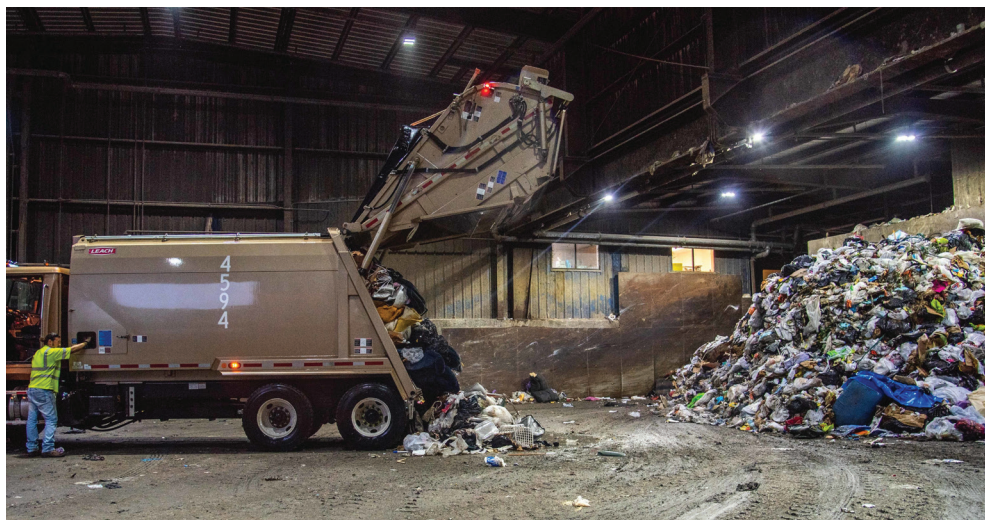
## Materials Banned from the Tan Refuse Cart

Carts containing these items will not be picked up. Use the Disposal & Recycling Guide at the back of this booklet for help.

- » Brush, [page 15](#)
- » Electronics banned from landfills, [page 14](#)
- » Hazardous, flammable, or other chemicals, [page 19](#)
- » Lead acid batteries (for vehicles, UPS devices, etc.), [page 14](#)
- » Motor oil, [page 20](#)
- » Paint, stains, varnishes, etc., [page 19](#)
- » Recyclables, [page 7](#)
- » Yard waste, leaves, weeds, etc., [page 17](#)
- » Bricks, dirt, rock, concrete, etc.
- » Explosives, fireworks, ammunition, etc.
- » Fluorescent bulbs/tubes
- » Infectious waste
- » Medical sharps (needles, syringes, lancets, etc.)
- » Medication
- » Pressurized gas containers, all sizes (camp stove canisters, propane tanks, helium, etc.)

## Disposal and Recycling Guide

Still searching for how to handle a particular item? Check the disposal guide that starts on [page 26](#). If it's not in the guide, feel free to call our offices for advice.



*The Streets Division collects over 45,000 tons of trash every year from the tan carts.*

## RECYCLING COLLECTION

### Collection Basics

- » Green recycling cart is emptied every-other-week on your scheduled day.
- » Get your collection schedule at [www.cityofmadison.com/collectionschedule](http://www.cityofmadison.com/collectionschedule) or contact the Streets Division office that services your home.
- » Follow all cart usage guidelines found "Using your Collection Carts" on [page 3](#).
- » Only place appropriate recyclables in the cart.
  - Recycling carts containing other material will not be picked up.

### General Recycling Guidelines

- » Recyclables must be clean, empty, and dry before placing into the cart.
- » Recyclables must be larger than 3 inches and shorter than 18 inches to go into the cart.
  - Items must weigh less than 10 pounds as well.
- » Avoid bagging your recyclables. They are best loose in your cart.
  - *Exception:* Shredded paper must be placed into a clear or see-through plastic bag. The bag of shredded paper must be tied shut so the paper cannot fall out. The bag of paper should not be larger than basketball.
  - If you absolutely must bag all of your recyclables, you need to use clear plastic bags or it will be considered trash at the sorting facility.

### What to do with Plastic Bags?

Do not place loose plastic bags or film into the recycling.

Return your plastic bags to a store that offers the plastic bag recycling. A list of stores can be found at [www.cityofmadison.com/Recycling](http://www.cityofmadison.com/Recycling).

By state law, cities cannot ban plastic bags. The best choice is to avoid creating plastic bags waste and use reusable bags when possible.

### How clean should your recyclables be?

Make an honest effort. Remove leftover food. Give bottles and cans a rinse. It doesn't have to be perfect, but you do need to try



Stone Cold Squeeze Often is the name of the electric recycling compactor at our Sycamore drop-off site

### MANDATORY RECYCLING

Did you know that recycling is mandatory in the City of Madison? It is! Of course, we all know how important recycling is for our planet, but City ordinance 10.18 does make recycling a requirement. And this is not just for single-family homes.

Each apartment building and commercial enterprise should provide adequate recycling services.

If your apartment building or workplace is not providing adequate recycling services, contact Building Inspection at 608-266-4551 and their inspectors will investigate.

### WHAT HAPPENS TO YOUR RECYCLABLES

Go to [www.youtube.com](http://www.youtube.com) and search for "Kipp Street Recycling" to find the video titled "Kipp Street Station MRF – A Division of Pellitteri Waste Systems." This video shows the recycling process for your recyclables. Pellitteri Waste System is the company that sorts recycling for the City of Madison.

### KEEP RECYCLING CART LID CLOSED

Rainwater and snow can ruin paper and cardboard inside the cart.

### DON'T FLATTEN BOTTLES & CANS

Flat plastic and metal items may get sorted in with the paper and cardboard. Keep your plastic bottles and aluminum cans three-dimensional so the sorting equipment captures the materials correctly.

## ARE YOU A MASTER RECYCLER?

Sustain Dane and the Streets Division have partnered to teach people to become master recyclers, and challenge them to share their recycling expertise with others. Watch the Sustain Dane website to see when the next class is available: [www.sustaindane.org/Better](http://www.sustaindane.org/Better)

## STILL LOOKING FOR AN ITEM?

Don't forget to check the disposal and recycling guide that starts on [page 26](#).

## WHAT IS THE RESOURCE RECOVERY SPECIAL CHARGE?

This is a monthly charge included on the municipal services bill. This special charge pays for the recycling collection operations of the Streets Division. More information about the special charge can be found at [www.cityofmadison.com/Recycling](http://www.cityofmadison.com/Recycling).

## STAY INFORMED

Services described in this book may change over time. The Streets Division's website will have the most current information. Residents are encouraged to sign up to receive News Releases and other communications from the City of Madison at [www.cityofmadison.com](http://www.cityofmadison.com). And, be sure to follow the City of Madison on your social media platforms.

## Materials Banned from the Recycling Cart

Please use the Disposal & Recycling Guide at the back of this book or contact the Streets Division for help. As noted on [page 7](#), any cart containing inappropriate material will not be emptied.

- » Electronics ([page 14](#))
- » Extension cords, holiday lights, etc. ([page 14](#))
- » Trash ([page 5](#))
- » Plastic bags ([page 7](#))
- » Batteries ([page 14](#))
- » Propane tanks (any size)
- » Clothes
- » Diapers
- » Fluorescent bulbs/tubes
- » Hoses
- » Rope
- » Scrap wood
- » Styrofoam
- » Water filters
- » And many other items

Use the guide on [page 10](#) to learn what can go into the recycling cart.

## Recyclables Outside of the Cart

Streets Division crews will collect excess recycling outside of the cart **two times** in a single calendar year, or at the discretion of a field supervisor. This includes cardboard that will not fit into the cart.

You must also follow the below rules. Failure to follow these rules will result in the material being left at the curb:

- » Your recycling cart must be full.
- » You are allowed a maximum of 10 bundles of cardboard outside of your cart.
- » Cardboard bundles must follow these rules:
  - All boxes flattened – do not stuff boxes into another box.
  - They must be approximately 3' wide by 3' long.
  - They must be approximately 6 inches tall
  - They must be tied together with rope, twine, or other means.
- » You are also allowed a maximum of 10 bags of other recyclables in addition to bundles of cardboard. The excess bags must not weigh more than 40 pounds apiece.
  - Recyclables outside of the cart must be placed in a clear bag.

## Other Options for Excess Recyclables

1. Take the recyclables that will not fit into the cart to a drop-off site.
2. Upgrade to a larger size of recycling cart. Contact us for details.



# Recycle More. Recycle Right.

- ✓ Keep clean and dry
- ✓ Avoid bagging
- ✓ Keep cart lid closed



## PAPER



Magazines      Cardboard  
Newspaper      Mail  
Office Paper      Cartons & Cups

## PLASTIC



Deli Containers      Bottles (lid ON)  
Clamshell Packaging      Dairy Tubs  
Containers #1-#7      Jugs

## GLASS



Bottles (remove caps)  
Jars (remove lids)

## METAL



Aluminum cans/pans      Pots & pans  
Empty aerosol cans      Steel tin cans



**Learn More:**  
[www.cityofmadison.com/recycling](http://www.cityofmadison.com/recycling)

TURN OVER FOR MORE DETAILS →

## Clean Paper Products

<b>What can be RECYCLED in the green cart?</b>	<ul style="list-style-type: none"> <li>» Cardboard cores from paper towels, bathroom tissue, etc.</li> <li>» Cardboard-sided cans</li> <li>» Cereal boxes (and similar)</li> <li>» Corrugated cardboard</li> <li>» Envelopes</li> <li>» Juice boxes, TetraPaks, and other aseptic/gable top cartons</li> <li>» Junk mail</li> <li>» Magazines and catalogs</li> </ul>	<ul style="list-style-type: none"> <li>» Newspapers and all the inserts</li> <li>» Office and computer paper</li> <li>» Outer frozen food boxes</li> <li>» Paper cups (including fast food &amp; coffee cups)</li> <li>» Paper egg cartons</li> <li>» Paper grocery bags</li> <li>» Paper milk and juice cartons (even if they have a plastic spout)</li> </ul>	<ul style="list-style-type: none"> <li>» Paper/cardboard backing off retail packages</li> <li>» Phone books</li> <li>» Receipts and bills</li> <li>» Wrapping and tissue paper</li> </ul> <div style="border: 1px solid black; padding: 5px; margin-top: 10px;"> <p>» <b>Shredded paper</b> must be in a clear or white bag. The bag of <b>shredded paper</b> should be no larger than a basketball.</p> </div>
<b>What's TRASH?</b>	<ul style="list-style-type: none"> <li>» Climacell packaging from meal kits</li> <li>» Diapers</li> </ul>	<ul style="list-style-type: none"> <li>» Facial tissues</li> <li>» Foil gift wrapping paper</li> <li>» Photographs (i.e., Polaroids)</li> </ul>	<ul style="list-style-type: none"> <li>» Sanitary napkins</li> <li>» Soiled and/or stained cardboard &amp; paper products</li> </ul>

## Clean Glass Products

<b>What can be RECYCLED in the green cart?</b>	<ul style="list-style-type: none"> <li>» Bottles (remove caps)</li> <li>» Jars (remove lids)</li> </ul>		
<b>What's TRASH?</b>	<ul style="list-style-type: none"> <li>» Baking dishes</li> <li>» Bottles &amp; jars with food or other products still inside them</li> <li>» Ceramics</li> <li>» Chemical bottles</li> </ul>	<ul style="list-style-type: none"> <li>» Dishes &amp; bowls</li> <li>» Drinking glasses</li> <li>» Flower pots</li> <li>» Incandescent &amp; LED light bulbs (fluorescent bulbs/tubes must be taken to retailer that sells them)</li> </ul>	<ul style="list-style-type: none"> <li>» Laboratory glass</li> <li>» Windows &amp; mirrors</li> </ul>

## Clean Plastic Products

<b>What can be RECYCLED in the green cart?</b>	<ul style="list-style-type: none"> <li>» All plastic containers #1 thru #7</li> <li>» Berry &amp; deli containers</li> <li>» Bottles (soda, water, etc.) - leave on lids</li> <li>» Clamshell containers</li> <li>» Condiment bottles/jars (catsup/ketchup, mustard, etc.) - leave on lids</li> </ul>	<ul style="list-style-type: none"> <li>» Cups if they are #1, #2, or #5</li> <li>» Dairy tubs with lids on (cottage cheese, etc.)</li> <li>» Frozen juice containers</li> <li>» Jugs (milk, juice, etc.) - leave on lids</li> <li>» Laundry bottles - leave on lids</li> </ul>	<ul style="list-style-type: none"> <li>» Plastic shell/plastic security packaging</li> <li>» Prescription bottles - must be at least 3 inches tall</li> </ul>
<b>What's TRASH?</b>	<ul style="list-style-type: none"> <li>» Bubble wrap</li> <li>» Containers with food still inside</li> <li>» Cups if they are #3, #4, #6, #7</li> <li>» Food wrap (i.e., Cling Wrap)</li> </ul>	<ul style="list-style-type: none"> <li>» Garbage bags</li> <li>» Motor oil bottles</li> <li>» Online shopping delivery bags</li> <li>» Takeout coffee cup lids</li> </ul>	<div style="border: 1px solid black; padding: 5px; margin-top: 10px;"> <p>» Plastic bags &amp; film must be returned to a retailer for recycling. Do not place them in your green cart. More info on page 7.</p> </div>

## Clean Metal Products

<b>What can be RECYCLED in the green cart?</b>	<ul style="list-style-type: none"> <li>» Aluminum foil (balled up to about the size of a baseball)</li> <li>» Aluminum, steel, and tin cans (including clean paint cans &amp; empty aerosol cans)</li> <li>» Metal lids from jars &amp; bottles</li> </ul>	<ul style="list-style-type: none"> <li>» Metal pipe 18" and less</li> <li>» Metal items weighing less than 10 pounds</li> <li>» Pots &amp; pans</li> <li>» Small metal appliances, such as toasters (please remove glass)</li> </ul>	<div style="border: 1px solid black; padding: 5px; margin-top: 10px;"> <p>» Small metal items like bottle caps, bolts, old keys should be placed into an empty tin can and the top tightly pinched close.</p> </div>
<b>What can be RECYCLED at the drop-off site?</b>	<ul style="list-style-type: none"> <li>» Metal items weighing more than 10 pounds</li> <li>» Car parts, like brake pads</li> <li>» Wire hangers</li> </ul>	<ul style="list-style-type: none"> <li>» Chain link fencing</li> <li>» Any metal item too big, too heavy, or too wiry for the collection cart</li> </ul>	

## LARGE ITEM COLLECTION GUIDELINES

### Need a Pickup? Complete the Work Order

You must complete a work order to have your large items collected. Fill out the work order before setting items out for pickup.

The work order form is available at [www.cityofmadison.com/LargeItemWorkOrder](http://www.cityofmadison.com/LargeItemWorkOrder)

### What are Large Items?

Large items are things that require special handling (like microwaves) and items that are too large for your carts. Examples include:

- » Appliances
- » Bulky metal items
- » Carpeting
- » Exercise equipment
- » Furniture
- » Pianos
- » Tires
- » And many other items

Some items require a fee for disposal or recycling. Turn to [page 13](#) to learn the items that require a fee. If the item is not listed, there is no fee for it.

### Collection Guidelines

- » Items must be out for pickup on the set-out date you selected in the large item work order form. Do not set them out too early because it makes neighborhoods appear cluttered. Do not set them out late, or you may miss your collection chance.
- » Place items 4 feet away from obstructions, such as utility poles, street signs, trees, fire hydrants, and other objects that can interfere with safe collection.
- » Do not place large items under low hanging wires or branches.
- » Keep metal and appliances separated from other large items so they can be easily collected for recycling
- » Large items must be less than 8 feet long to be picked up.

### Why are the work order set-out dates on Sundays?

Crews will be working to collect large items during the work week. The items must be out before collection begins. Crews could be at your home as early as 6:30am Monday morning, so you need to have the items out and ready.

### Use Your Trash Cart

Trash items that do not require a fee can be placed into your cart. For example, toilets, mirrors, lumber pieces, ottomans, and small shelving units. Everything in the cart is destined for the landfill, so it's okay to break things so they can fit inside.

### WHAT IF SOMEONE ILLEGALLY DUMPS AN ITEM ON YOUR PROPERTY?

#### Step 1

Report the crime by contacting the Madison Police Department to file a report at 608-255-2345 or through their Self Reporting line at 608-245-3662.

#### Step 2

Contact the Streets Division that services your neighborhood and provide the MPD case number provided to you after your report.

### ILLEGAL METAL SCRAPPING

People scavenging metal (and other items) from the curb is an ordinance violation in Madison. Also some items, like air conditioners, require careful handling to ensure the chemicals within them are processed safely, and it is unknown how scrappers are handling these harmful substances.

Help prevent scrappers by placing large items for pickup within the guidelines. And if you see someone illegally gathering items from the curb, contact the non-emergency police number at 608-255-2345 to report the activity.

### REFUNDS?

Fees for curbside collection are non-refundable. If you purchase a recycling fee sticker to drop-off an item, and no longer need it, you can return the unused sticker for a refund at any Streets Division office.

## HOW TO PAY FOR FEE ITEMS

### Online

Use the work order system at [www.cityofmadison.com/LargetemWorkOrder](http://www.cityofmadison.com/LargetemWorkOrder).

### Phone

Call 608-266-4681 or 608-246-4532 to use a credit card over the phone.

### Mail

Mail a check along with a note explaining your request.

Make checks payable to City Treasurer.

Send payment and note to:

- Streets Division  
1501 W. Badger Rd.  
Madison, WI 53713

or

- Streets Division  
4602 Sycamore Ave.  
Madison, WI 53704

### In Person

Streets Division offices:

- 1501 W. Badger Rd.
- 4602 Sycamore Ave.

## WILL YOU GET A LARGE ITEM STICKER?

If you paid for curbside pickup, you will not receive a fee sticker because your work order will show us you have paid.

If you are paying to drop-off an item then you will get a sticker. You must wait until you receive the sticker before bringing the item to a drop-off site.

## Items that Will Not Be Collected

- » Material from work performed by a contractor (i.e., home remodeling)
- » Items small enough to fit into a collection cart and do not require a fee sticker
- » Concrete and items filled with concrete (i.e., basketball hoop post)
- » Chemical drums & containers
- » Other drums and barrels of 25 gallon capacity and higher
- » Pressurized gas containers (i.e., propane tanks, helium tanks, oxygen tanks)
  - If completely empty and the valve is open, these metal containers can be taken to a drop-off site ([page 19](#))

## Special Handling Instructions for Certain Large Items

- » Carpet
  - Roll up and tie or bind
- » Concrete sinks
  - Must be in 4 or fewer pieces
- » Metal and wood poles
  - Remove concrete and dirt
- » Lawnmowers, snow blowers, tillers, etc.
  - Drain fuel and oil
- » Rootballs
  - Remove dirt
- » Windows, mirrors, glass doors and tables, etc.
  - Tape glass to control breakage



Collecting a mattress & box spring with a truck-mounted crane.

## What large items require a fee and how much are they?

Fees			
\$35 Fee	\$15 Fee	\$10 Fee	\$5 Fee
Air compressors	Boat motors	Tires - large truck	Tires - car or small truck & off the rim
Air conditioners	"Dorm" refrigerators (refrigerators weighing less than 50 pounds)	Tires - on rim	
Boats	Fluorescent light fixtures		
Copy machines (office sized)	Garden tillers		
Dehumidifiers	Gas grills		
Dishwashers	Items with similar engines to lawn mowers, garden tillers, etc.		
Dryers	Lawn mowers		
Freezers (must remove doors)	Leaf shredders		
Furnaces	Microwave ovens		
Hot tubs	Snow throwers		
Ice machines			
Large commercial appliances			
Large medical devices			
Ovens			
Ranges			
Refrigerators (must remove doors)			
Stoves			
Trash compactors			
Washers			
Water coolers			
Water heaters			
Water softeners			
Wood stoves			

## RECYCLE BATTERIES SAFELY

Lithium batteries can cause fires if damaged or handled incorrectly. Recycle your batteries safely at the Streets Division drop-off sites by following the below instructions:

### TAPE LITHIUM, NICKEL, & OTHER BATTERIES

Use clear tape to cover the ends of lithium and nickel batteries. Packing tape works best. Be sure to tape the ends (or other metal contact points) of all household batteries more than 12 volts.

### HOW TO TELL IF YOU HAVE A LITHIUM BATTERY

Check the label. Look for "lithium," "Li-ion," "Li," or "Li-Po." They can be small silver button batteries for watches or hearing aids. They are often found in cameras, cell phones, and laptops. They come in a variety of forms from AA batteries to big ones powering lawnmowers and bicycles.

### HOW TO TELL IF YOU HAVE A NICKEL BATTERY

Check the labels. Batteries with nickel have "NiCD" or "NIMH" written on them. They are rechargeable batteries often found in cordless phones, drills, and other rechargeable devices.

### RECYCLE LEAD ACID BATTERIES

Vehicle batteries and other lead acid batteries, like those that power uninterruptible power supplies, must be recycled. They can be taken to a Streets Division drop-off site or an area scrap yard for proper recycling.

## ELECTRONICS RECYCLING

### How to Recycle Electronics

Take them to a Streets Division drop-off site or a reputable private electronics recycler. At these spots, your data will be protected and the materials will be handled correctly.

For more information about recycling electronics visit [www.cityofmadison.com/eCycle](http://www.cityofmadison.com/eCycle). To learn more about the Streets Division drop-off sites turn to [page 19](#).

### What Electronics Can You Recycle at the Drop-off Sites?

State law requires you to recycle the electronics listed below. All of these items are accepted.

In addition, you can recycle most anything that is powered by a plug or a battery at the drop-off sites. Video game systems, cameras, stereo equipment, Christmas lights, extension cords, electric toothbrushes, vacuums, hair dryers, and on and on. If you have questions about what we can accept, please contact us.

### Electronics You Are Required to Recycle

These items **MUST** be brought to a drop-off site or a reputable private recycler for recycling.

- » Cell phones
- » Computers
  - Desktops
  - Laptops
  - Netbooks
  - Tablets
- » Computer monitors (all styles)
- » Computer peripherals
  - Mice
  - Keyboards
  - Computer speakers
  - Modems
  - Routers
  - Scanners, web cameras, external drives, etc.
- » Digital video players/recorders
- » DVD players
- » Blu-ray players
- » E-readers
- » Fax machines
- » Printers
  - Desktop printers
  - Fax/scan/copy printers
  - 3-D printers
- » Televisions
- » VCRs

### Televisions, Monitors, Computers, and Laptops

Do not place televisions, monitors, computers, and laptops to the curb for collection. They must be taken to a drop-off site. Turn to [page 19](#) for more information about the drop-offs.

If these items are set to the curb, they will be removed by Streets Division staff. The property owner will be assessed an administrative fee for each item collected that had been set out contrary to this rule.

## BRUSH COLLECTION

Curbside brush collection begins in the spring and ends in the fall. Residents will have multiple pickup opportunities.

Brush can also be delivered to the drop-off sites. For more information, turn to "[Drop-Off Sites](#)" on page 19.

### What is brush?

- » Woody material you have trimmed from your trees, shrubs, and bushes.
- » The pieces must be between 18 inches and 8 feet long.
  - Pieces smaller than 18 inches are yard waste. For more information about yard waste, turn to [page 17](#).
- » The pieces must not be thicker than 8 inches in diameter.

### Brush Collection Guidelines

Following these guidelines keeps the workers safe and equipment functioning. Brush not meeting these guidelines may not be collected.

- » Neatly stack brush with cut ends facing the same direction.
- » Place brush on the terrace or street edge at least four feet away from trees, parked cars, fire hydrants, utility poles, mailboxes, large items, or other obstructions (where possible).
  - Do not place brush in the street.
  - Do not block the sidewalk with brush.
- » Bundle small amounts of brush with string or twine. Bundles may not exceed 4 feet in length or weigh more than 40 pounds.
  - If you choose to bundle your small piles of brush, you must use string or twine. Do not use any form of wire. Wire damages the chipper blades.
- » Remove all dirt and roots.
- » Do not put brush into bags, boxes, or trash cans.

### When to Place Brush Out for Pickup

Go to [www.cityofmadison.com/brushcollection](http://www.cityofmadison.com/brushcollection) and enter your address into the form. This will let you know when to set brush out for pickup.

If you do not have internet access, please call the Streets Division office that services your home to learn your set-out dates.

### What to do with brush when the City is not collecting it at the curb?

Take it to a drop-off site or the Brush Processing Center. For more information about the drop-off site, turn to "[Drop-Off Sites](#)" on page 19.

Do not put brush in your refuse or recycling carts. Collection carts will not be collected if they contain brush.

### DO NOT MIX BRUSH AND YARD WASTE

**The Streets Division will not collect it.**

Brush and yard waste are different materials that are processed differently at different dump locations. Brush is processed into wood chips, while yard waste is taken to a composter.

### OVERSIZED BRUSH PILES

When collection crews encounter a pile that will take more than 10 minutes to feed through their brush chipper, they will assign this pile to be collected by a truck-mounted crane vehicle called a "clam truck." The clam should arrive within three business days to collect the large pile.

### WHY DOES BRUSH PICKUP END IN THE FALL?

The crews that collect brush are needed to help with picking up the significant volume of leaves generated in the fall.

### WHY ARE THE SET-OUT DATES SUNDAY?

Collection crews will be through sometime during the work-week following your set-out date. If you set out brush after the date given on the website, you may miss your collection opportunity.

### STAY INFORMED

Services described in this book may change over time. The Streets Division's website will have the most current information. Residents are encouraged to sign up to receive News Releases and other communications from the City of Madison at [www.cityofmadison.com](http://www.cityofmadison.com). And, be sure to follow the City of Madison on your social media platforms.

## **STREETS DIVISION CREWS WILL NOT COLLECT BRUSH CUT BY CONTRACTORS**

If a resident or homeowner hires an individual or company to cut brush, they must make arrangements with that contractor to haul away the brush debris they created.

Contractors may not use the Streets Division drop-off sites.

The only City service available for contractors is the Brush Processing Center.

## **MULCH & PROCESSING FEES**

The prices for mulch and brush processing, along with fees for delivery, can be found in the brush section of the Streets Division website.

## **BULK CUSTOMER DISCOUNT**

If you will be purchasing over 20 semi-truck loads of mulch, you can qualify for discounted bulk rates. Contact the Brush Processing Center for details.

## **EAB SAFE MULCH**

The processing center has been certified as a safe shredding site for ash trees by the Wisconsin Department of Agriculture, Trade, and Consumer Protection. Wood mulch from this site should be free of the emerald ash borer.

## **BRUSH PROCESSING CENTER**

The Brush Processing Center at 121 E. Olin Ave. receives branches and makes wood mulch.

The center can be called at 608-266-4911. The brush processing center is open 7:30am to 2:30pm, Monday to Friday.

### **Mulch**

Mulch is available at this location. Madison residents can take up to 30 gallons of mulch to use on their property at no charge.

Larger volumes are available for purchase. Delivery is possible for an additional fee and only in semi-truck load quantities.

### **Receiving Brush**

The center also accepts brush from contractors. Residents with brush piles too big for the drop-off sites can also use this facility.

There is a per-ton fee to accept brush for processing.

### ***Stack Your Brush at the Curb Like this:***



*It is stacked neatly. The cut ends are facing the same direction. The pieces are the correct size.*



## LEAF, YARD, AND GARDEN WASTE COLLECTION

The Streets Division conducts curbside leaf, yard, and garden waste collection during the spring and the fall only.

### What is leaf, yard, and garden waste?

- » Leaves, pine needles, grass clippings, weeds, and other plant debris.
- » Rose canes, corn stalks, sunflower stalks, etc.
- » Vines.
- » Pumpkins, pine cones, black walnuts, crabapples, etc.
- » Sticks and twigs less than 18 inches in length.

### Leaf, Yard, and Garden Waste Collection Guidelines

Material not following these guidelines may not be collected.

- » Only place leaf, yard, and garden waste to the curb during collection periods.
- » Do not place leaves and other yard waste into the street or gutter.
  - Leaves and yard waste must be on the terrace or at the road edge for collection.
- » Do not mix brush and yard waste together into the same pile.
- » During collection periods, leaves and other yard waste can be bagged at the curb. Please leave the bags open at the top.
  - Leaves and yard waste can be piled loose as well. To prevent material blowing into the street, you can cover your material with a tarp.

*Special note: If you elect to bag your yard waste, the Streets Division recommends using compostable paper leaf/lawn bags.*

- » Piles should be at least 4 feet away from any obstruction (where possible).



Curbside leaf collection operations.

### CONSIDER COMPOSTING

For more information on how to compost in your backyard, go to [www.cityofmadison.com/streets/compost](http://www.cityofmadison.com/streets/compost).

### RIPPLE EFFECTS

Learn more about protecting our waterways at [www.ripple-effects.com](http://www.ripple-effects.com).

### LEAF-FREE STREETS

The best way to help protect our lakes is by removing leaves from the street gutter before rainstorms. Sign up for email or text alerts from Ripple Effects about pending rainfall so you know to rake the gutter by visiting <https://ripple-effects.com/Leaf-free-Streets>.

### GARLIC MUSTARD AND OTHER INVASIVE SPECIES

Bag garlic mustard and other restricted invasive plants and place into trash. Do not include with yard waste. For additional information about invasive species visit the Wisconsin DNR's website and search for "invasive plants."

### NEIGHBORHOOD CLEANUP?

If you have organized an event to help pull garlic mustard from a greenspace or park, please contact the Streets Division *before* the event to coordinate the collection of the bags.

## STREET SWEEPING

Streets Division crews operate street sweepers from the spring to the winter. Sweepers need water to function so they cannot be used during the cold months.

During the spring, sweepers work to collect all the accumulated salt, sand, and grit from the winter.

During the summer, sweepers rotate through the city multiple times to collect debris in order to prevent it from entering the storm water system.

During the fall, street sweepers trail behind leaf collection crews to vacuum up debris left in the roads after pickup occurs. Leaf pickup crews and sweepers work at different speeds so there will be a gap between when pickup occurs and when sweepers can clean up behind them.

### How to Help Street Sweepers

- Sweepers work very slowly. They have a maximum speed of 5MPH when actively collecting debris. So, be patient when encountering them on the roads. Do not tailgate them or cut them off.
- For sweepers to be effective, they need access to the curb, so be sure to follow parking rules, and keep items out of the street that do not belong, such as refuse and recycling carts.



## When to Place Leaves & Yard Waste Out for Pickup

Go to [www.cityofmadison.com/yardwaste](http://www.cityofmadison.com/yardwaste) and enter your address into the form. Set your material out on the dates shown.

If you do not have internet access, please call the Streets Division office that services your home to learn your set-out dates.

## What to do with leaves, yard, and garden waste when the City is not collecting it at the curb?

Take your yard waste, garden waste, and leaves to a drop-off site. For more information about the drop-off sites, turn to "[Drop-Off Sites](#)" on [page 19](#).

Do not put leaves or yard/garden waste in your refuse or recycling carts. Collection carts will not be collected if they contain this material.

## Protect Our Lakes

Managing yard waste correctly protects our lakes. When rain falls on leaf piles in the street, the water pulls nutrients from the leaves and drains them into our lakes and that contributes to toxic algae blooms, murky water, and weeds.

Here's more ways to keep streets leaf-free:

- » Mulch leaves with your lawnmower where they fall in your lawn.
- » Try composting yard waste rather than piling it at the curb.
- » Keep leaves out of the street by raking the street gutter before rain storms
  - See the "Leaf-free Streets" information in the sidebar of [page 17](#).
- » And, of course, following the Streets Division guidelines.

## Why are the set-out dates all Sundays?

Crews will be working through neighborhoods the work week following the set-out date. Leaves and yard waste need to be out and ready for pickup when the work begins.

Multiple neighborhoods all share the same set-out date. While some places will be collected on the Monday following the set-out dates, others will occur later in the week.

You need to have your leaves and yard waste out on the dates listed on the website because if you wait you may miss your chances.

## DROP-OFF SITES

### Sites Are Changing – Stay Informed

The Badger Rd. drop-off location is now permanently closed.

Budget and staffing considerations will also create new changes to locations, hours, and possibly even materials accepted over the years to come.

Before you load your vehicle, you must be absolutely sure what you have is accepted, and the site you wish to visit is open.

The drop-off site webpage will have the most current information about the sites.

The website is [www.cityofmadison.com/DropOffSites](http://www.cityofmadison.com/DropOffSites).

### Drop-Off Site Restrictions

- » Only City of Madison residents or taxpayers may use the site.
  - Proof of residency or taxpayer status is required. Acceptable forms of identification include driver's license, tax bill, utility bill, vehicle registration, signed copy of a lease or closing document with name of the drop-off site user and address, etc.
- » Contractors may not use the drop-off site.
  - Anyone who is paid to perform a job is considered a contractor and must find alternative means to dispose of the material their work generated.
- » Site users are restricted to one pick-up truck or small trailer load of all material a day (including brush).
  - If the load is larger than 5' x 8' then it is too large for our sites and should be hauled to the Dane County Landfill or another proper disposal site.



*The drop-off sites are busy places. Be sure you pack patience along with the items for disposal.*

## PAINT AND OTHER CHEMICALS – DANE COUNTY CLEAN SWEEP

Dane County residents and those in the surrounding area can dispose of their liquid paint and other hazardous chemicals at the year round Dane County Clean Sweep facility. All manner of hazardous chemicals are accepted at Clean Sweep, and they accept some electronics as well. Please note that this site is run by Dane County, not the City of Madison.

### Clean Sweep Location

7102 US Highway 12 (Dane County Landfill complex across from the Yahara Hills golf course)

### Clean Sweep Fees

There is a per household trip fee for using the site. Additional fees for electronics may apply. Additional fees are assessed for businesses or residents from outside Dane County.

### Clean Sweep Hours

- Open Monday to Friday, 7:00am to 2:45pm.
- Open Saturday, 8:00am to 10:45am.
- Closed Sundays and holidays.

### Clean Sweep Information

Call the Dane County Clean Sweep office at 608-838-3212, or visit their website: [www.danecountycleansweep.com](http://www.danecountycleansweep.com).

## MOTOR OIL DROP-OFF SITES

The City of Madison Engineering Division provides motor oil drop-off sites for the public. In these containers, residents can also dispose of transmission fluid, brake fluid, and power steering fluid.

The sites are periodically closed for a random test for contamination. The sites are generally open again 24 hours after the testing has been completed.

Previous motor oil drop-off sites have been closed due to contaminants, so please be sure you are disposing of the correct fluids and oil and these sites.

A list of available City locations can be found at [www.cityofmadison.com/WasteOilDropSites](http://www.cityofmadison.com/WasteOilDropSites)

### Private Businesses

Several oil change and motor vehicle service providers will accept your motor oil. Some may charge a small fee. For a list of available locations and their contact information, check the Dane County Department of Waste & Renewables disposal directory at <https://landfill.countyofdane.com/recycle-locations>.

## STAY INFORMED

Services described in this book may change over time. The Streets Division's website will have the most current information. Residents are encouraged to sign up to receive News Releases and other communications from the City of Madison at [www.cityofmadison.com](http://www.cityofmadison.com). And, be sure to follow the City of Madison on your social media platforms.

## Items Accepted at Drop-off Sites in 2023

	4602 Sycamore Ave	402 South Point Rd	121 East Olin Ave
Appliances*	Yes	Yes	Yes
Brush	Yes	Yes	Yes
Clothing & shoes	Yes	No	No
Cooking oil	Yes	Yes	Yes
Dirt / soil / rock / concrete	No	No	No
Electronics	Yes	Yes	Yes
General recyclables	Yes	Yes	Yes
General trash	Yes	Yes	Yes
Household batteries	Yes	Yes	Yes
Large Items*	Yes	Yes	Yes
Lead acid batteries (vehicles, UPS devices, etc.)	Yes	Yes	Yes
Scrap metal & other metal items	Yes	Yes	Yes
Styrofoam	Yes	Yes	Yes
Televisions	Yes	Yes	Yes
Tires*	Yes	Yes	Yes
Wood, lumber, drywall, etc.	Yes	Yes	Yes
Yard waste	Yes	Yes	Yes

\*These items may require a recycling fee. More information about the fees and how to pay them, turn to [page 12](#) and [page 13](#).

## Drop-Off Site Hours for 2023

	4602 Sycamore Ave		402 South Point Rd		121 East Olin Ave	
	Summer	Winter	Summer	Winter	Summer	Winter
<b>Monday</b>	7:30am - 2:45pm	7:30am - 2:30pm	7:30am - 2:45pm	7:30am - 2:30pm	3:00pm - 7:00pm	CLOSED
<b>Tuesday</b>	7:30am - 7:00pm	7:30am - 2:30pm	7:30am - 7:00pm	7:30am - 2:30pm	3:00pm - 7:00pm	CLOSED
<b>Wednesday</b>	CLOSED	CLOSED	CLOSED	CLOSED	3:00pm - 7:00pm	CLOSED
<b>Thursday</b>	7:30am - 7:00pm	7:30am - 2:30pm	7:30am - 7:00pm	7:30am - 2:30pm	3:00pm - 7:00pm	CLOSED
<b>Friday</b>	7:30am - 2:45pm	7:30am - 2:30pm	7:30am - 2:45pm	7:30am - 2:30pm	CLOSED	CLOSED
<b>Saturday</b>	9:00am - 4:00pm	CLOSED	9:00am - 4:00pm	CLOSED	9:00am - 4:00pm	CLOSED
<b>Sunday</b>	CLOSED	CLOSED	CLOSED	CLOSED	9:00am - 4:00pm	CLOSED

Summer dates: April 2023 to December 2023

Winter dates: December 2023 to April 2024

## URBAN FORESTRY

### What does Streets Urban Forestry do?

We plant, prune, remove, and maintain trees on city property, like the terrace. Our goal is to create and preserve a vibrant, resilient, and diverse urban forest for all to enjoy.

### When will the trees along my street receive their pruning?

Pruning takes time to do safely and correctly. The City owns thousands of trees along the hundreds of miles of roads in Madison. Each city tree requires pruning at some point, too. Since there are so many trees and the work can be slow, it can take several weeks to provide care to a few city blocks.

The best tool to watch the progress of arborists is the Pruning Map on the Forestry website. The map will show you where crews are working and what trees they will be servicing.

### Invasive Species & the Emerald Ash Borer (EAB)

Urban Forestry has been executing the EAB plan since 2012. We are working to treat trees where appropriate, and remove when necessary. Early in 2020, the final pre-emptive removals of trees took place. You can read more about EAB on the Urban Forestry website: [www.cityofmadison.com/forestry](http://www.cityofmadison.com/forestry).

EAB is not the only threat to our trees. Other insects and diseases could impact our community in the years to come. We are committed to taking the appropriate steps to protect our urban forest from whatever trouble lies ahead.

### What to do about a Damaged or Injured Tree

- » For trees along the street in the terrace or right-of-way
  - Contact Forestry during normal business hours (7:00am to 3:00pm, Monday to Friday).
    - Forestry phone number: 608-266-4816
  - Contact the City of Madison Police for after-hours tree emergencies (like a tree has fallen, or other emergency)
    - Madison Police dispatch: 608-255-2345
- » For private property trees
  - The homeowner is responsible for cleanup if a privately owned tree is damaged or injured.
  - City Urban Forestry recommends choosing a certified arborist to assist you. To find a certified arborist, visit the Wisconsin Arborist Association's website ([www.waa-isa.org](http://www.waa-isa.org)).

### HAVE A QUESTION OR COMMENT ABOUT CITY-OWNED TREES?

#### Forestry Contact & Hours

- Monday – Friday
- 7:00am – 3:00pm
- 608-266-4816

#### After-Hours Tree Emergency

- Call the Dane County Non-Emergency Line: 608-255-2345

#### Tree on private property?

Consult a certified arborist. Find one at the Wisconsin Arborist Association's website: [www.waa-isa.org](http://www.waa-isa.org).



*Pruning trees is not for people afraid of heights!*



There are over 96,000 trees along the hundreds of miles of roadways in the City of Madison.

## TREE CITY USA

Madison has been part of Tree City USA for over 30 years! You can read more about this special designation at [www.arborday.org](http://www.arborday.org).

## THE YELLOW DOT

This means the tree has been marked for removal. The tree may be diseased, dead, or another situation that requires its removal. The yellow dot does not mean it is an ash tree.

## TREE ON A POWER LINE

Call Madison Gas & Electric at 608-252-7111.

## CARING FOR A NEW TERRACE TREE

Here's how you can care for your new terrace tree:

- Water the tree, depending on rainfall. Soil should be moist.
- Use mulch as a weed barrier, and leave space near the trunk.
- Do not use weed killer near the tree.
- Be careful not to damage the tree with lawnmowers, weed eaters, bicycle locks, etc.
- Leave the stakes. Urban Forestry will remove them after one growing season.

## STAY INFORMED

Services described in this book may change over time. The Streets Division's website will have the most current information. Residents are encouraged to sign up to receive News Releases and other communications from the City of Madison at [www.cityofmadison.com](http://www.cityofmadison.com). And, be sure to follow the City of Madison on your social media platforms.

## Stump Removal

After a tree has been removed from the City's right-of-way, the stump will be removed at a later time. Stump removal is a very slow and complicated process. It can take several weeks, and in some cases even several months, for the stump to be removed. More information about this process can be found at [www.cityofmadison.com/forestry](http://www.cityofmadison.com/forestry).

After the stump is removed, the hole will be filled and grass seed will be put down. It is the homeowner's responsibility to water this area to assist with grass growth and to help prevent weeds developing.

## Replacement Trees

When selecting trees to plant, Urban Forestry uses best management practices supported by the International Society of Arboriculture and the Arbor Day Foundation. Arborists choose the tree that's the most appropriate for the area with the ultimate goal of creating a healthy and diverse urban forest.

## Urban Forestry Special Charge

This is a charge that arrives on the monthly Municipal Services bill. It funds the services provided by the Urban Forestry section.

Further details about the history of the charge and the specifics on how it is calculated can be found on the Urban Forestry website:

[www.cityofmadison.com/forestry](http://www.cityofmadison.com/forestry).



*It takes a team to plant a tree.*

## MOVING DAYS

Every year in the middle of August, nearly 20,000 student-residents of Madison all move to new apartments at the same time. And every year, this big move out generates nearly 1 million pounds of extra trash for the landfill.

Following the below steps will help make the move efficient and safe for everyone. Plus, it will save some precious landfill space.

More details about move out can be found at the Moving Days website: [www.cityofmadison.com/movingdays](http://www.cityofmadison.com/movingdays).

### Step 1: Plan Ahead

Many downtown leases end of August 14 or 15 every year. Use the weeks before this time to organize your stuff. Make a checklist to figure out what needs to be moved to the new location, what can be sold through person-to-person exchanges, and what should be donated. Then use this guide on how to handle the rest.

### Step 2: Donate What's Possible

All the furniture and other large items that the Streets Division collects during student move goes to the landfill – which wastes all the usable stuff. Madison has over a dozen different organizations that accept material for donation, and many of them offer home pickup service, so it's very easy and convenient.

Go to [www.cityofmadison.com/movingdays](http://www.cityofmadison.com/movingdays) for contact information of these organizations and learn what they can accept.

### Step 3: Use the Carts

The Streets Division provides extra collection in the move out areas of both the refuse and recycling carts during the lead up to August 15.

Using the carts correctly makes collection faster and safer for our crews. The dates on when the extra collections begin can be found on the moving days website.



Donate or re-sell your usable items so they don't go to the landfill, like this couch.

### NOT A STUDENT BUT STILL MOVING?

You can learn about furniture and large item collection on [page 11](#) of this guide. And you can learn about the guidelines of having more refuse or recycling than can fit into your cart on [page 3](#). You can also give the office that services your home a call to answer any questions you have.

You, too, can use the same donation opportunities listed on the moving days website. Students aren't the only ones filling up the landfill with usable goods, so be sure to do your part, too.

### KNOW THE COLLECTION RULES

Use this guide and the material index at the back to be sure you are following the rules. If you still have questions, please contact the Streets Division office for guidance. For apartments on the isthmus, call 608-246-4532. For apartments near Camp Randall, call 608-266-4681.

### STAY INFORMED

Services described in this book may change over time. The Streets Division's website will have the most current information. Residents are encouraged to sign up to receive News Releases and other communications from the City of Madison at [www.cityofmadison.com](http://www.cityofmadison.com). And, be sure to follow the City of Madison on your social media platforms.



## STOP FOOD WASTE

Food waste makes up approximately 21% of what we put into your garbage. That thousands of tons of wasted food every single year, and as it generates the harmful greenhouse gas methane as it rots in landfills. We can be better.

Learn ways you can help control your food waste at [www.cityofmadison.com/foodscraps](http://www.cityofmadison.com/foodscraps).

### Plan

Meal planning is a simple first step to controlling waste. By having a plan, and sticking to it, you save money and cut down on uneaten food.

### Use

This is the best step to controlling food waste. Use what you buy. And be sure to store your food correctly to extend its useful life.

### Create

Get creative! Foods just past their prime can be used many different ways. And you can also create opportunities for others by donating appropriate excess food to area food banks.

### Scrap

Compost what you can't use. You can use your backyard. And the City of Madison is still working on ways for food scrap composting to be available to more residents.

Stay up to date on all your composting opportunities at the Food Scraps website, [www.cityofmadison.com/foodscraps](http://www.cityofmadison.com/foodscraps).

### Outreach Material Available

Interested in spreading the word? Poster-sized versions of each step to prevent food waste are available. There are magnets available to encourage proper food donation, and there are how-to compost at home zines, too. Just contact the Streets Division to receive the materials you can distribute.

### Who designed the food scraps artwork?

The City of Madison worked with UnderBelly Creative to make these outreach materials eye-catching and useful.



## WINTER INFORMATION

For all things winter in Madison, go to [www.cityofmadison.com/Winter](http://www.cityofmadison.com/Winter). On that site, you can sign up for alerts, see parking maps, find where to get free sand, and learn a lot more.

### Sign Up for Updates and Alerts

On the Winter webpage, you can sign up to receive emailed Snow Plow Updates that explain how the Streets Division is responding to every snow event and what to expect on the roads.

You can also sign up to receive text and email alerts each time a Snow Emergency is declared.

### Winter Parking Rules

#### *Alternate Side Parking Rules*

From November 15 to March 15 residents who park outside of the Snow Emergency Zone must following alternate side parking rules every night, regardless of weather conditions.

- » On even-numbered days, make sure your vehicle is parked on the even house-numbered side of the street between the hours of 1:00am and 7:00am.
- » On odd-numbered day, make sure your vehicle is parked on the odd house-numbered side of the street between the hours of 1:00am and 7:00am.

#### *Snow Emergency Zone*

On the isthmus and some surrounding neighborhoods, you only need to follow alternate side parking rules during Declared Snow Emergencies. The exact boundaries of the Snow Emergency Zone can be found on the Winter website.

#### *Follow Parking Signs*

You also must follow all posted parking rules even during Declared Snow Emergencies.

### Citywide Plowing & Declared Snow Emergencies

All City of Madison streets will be plowed when there are three or more inches of snow on the roads and the storm is at or near its end.

Snow emergencies are declared to assist with plowing operation by requiring everyone throughout Madison to follow alternate side parking rules. Fines for violating the alternate side parking rules increase during a snow emergency, and you are more likely to be towed.

### How to Help with Plowing Operations

1. Do not place your trash or recycling carts in the street gutter for collection.
2. Avoid parking on the street if possible and follow parking rules if you must.

### WHAT'S THE PROBLEM WITH SALT?

Salt spread on roads, sidewalks, driveways and parking lots infiltrate into our waterways, including the water we drink. Learn more about salt usage at [www.cityofmadison.com/winter](http://www.cityofmadison.com/winter).

### BE SALT WISE

If you must use salt, you can learn how to use the correct amount at [www.wisaltwise.com](http://www.wisaltwise.com).

### CHOOSE A CERTIFIED SALT APPLICATOR

If you are hiring someone to clear your sidewalk, driveway, or parking lot, look for contractors who have received their Winter Salt Certification from the Engineering Division.

### MAILBOX DAMAGED?

Document the damage and report it at [www.cityofmadison.com/reportaproblem](http://www.cityofmadison.com/reportaproblem). A supervisor will inspect the mailbox to see if you are eligible for a reimbursement.

### FROM MADISON TO MOJAVE

Madison has over 1,800 miles of traffic lanes. That's the distance from here to the Mojave Desert. That doesn't consider all the bus stops, alleyways, paths, and sidewalks. That's a lot of pavement!

## DISPOSAL AND RECYCLING GUIDE

Item	Instructions
3-D printers	No fee. Banned from curb collection. Electronics Recycling at drop-off sites.
Air conditioner	\$35 fee. Large item work order for curbside pickup or take drop-off site.
Air purifier	No fee. Electronics Recycling at drop-off sites (preferred) or Tan Refuse cart.
Aluminum foil pans	Green Recycling cart or drop-off site. Rinse out.
Aluminum foil sheets	Remove food and ball into about the size of a baseball or softball. Place into Green Recycling cart.
Ammunition	Contact law enforcement agencies at 608-255-2345 for disposal.
Antifreeze	Accepted at most instant oil change locations. Or take to Dane County Clean Sweep.
Appliances - large	See " <a href="#">Large Item Collection Guidelines</a> " on page 11.
Appliances - small (toasters, Instapots, etc.)	Drop-off site. Or, if they look metallic on the outside and are mostly metal, place in recycling cart.
Asbestos	Contact Dane County Clean Sweep for disposal at 608-838-3212.
Ashes (COLD ONLY)	Double-bagged and sealed in Tan Refuse cart or drop-off site.
Bags, paper	Green Recycling cart or drop-off site
Bags, plastic	Bundle and return to retailer. Do not place into recycling cart.
Ballast	\$15 fee. Take to drop-off site. Do not place into the recycling or refuse carts. Ballasts removed from items like fluorescent light fixtures are too small for large item collection.
Barrels/drums (25 gallon capacity and higher)	Banned from collection or drop-off. Contact Dane County Landfill for disposal options, 608-838-9555.
Batteries, alkaline	Drop-off site for recycling (preferred) or Tan Refuse cart curb collection. Also private vendor (Batteries Plus, etc.).
Batteries, lead acid (vehicles, UPS, etc.)	Banned from curbside collection. Take to Streets Division drop-off site, scrap yard, or area automotive store for recycling.
Batteries, lithium/button	Drop-off site for recycling (preferred) or Tan Refuse cart. MUST TAPE ends of lithium batteries prior to recycling.
Batteries, rechargeable	Drop-off site for recycling, or a reputable private vendor (Batteries Plus, hardware stores, etc.).
Bicycles	Large item work order for curbside pickup or drop-off site. If reusable or if it can be repaired, donate it to an area thrift store or an organization like Freewheel or Dream Bikes.
Bicycle tires	Recycle at drop-off site. Alternative: contact bicycle shop of choice to see if they have a tire recycling program.
Blu-ray players	No fee. Banned from curb collection. Electronics Recycling at drop-off sites.
Boat motors	\$15 fee. Large item work order for curbside pickup or drop-off site. Remove gas and oil if possible.
Boats	\$35 fee. Large item work order for curbside pickup or drop-off site. Must be less than 8 feet long.
Books - hard and soft cover	Donate to thrift stores, resell to second-hand book vendors, or place in Little Free Libraries. To recycle books, take to Madison Recycling Center (operated by Waste Management) at 2200 Fish Hatchery Rd., 608-251-2115. Or Tan Refuse cart or refuse at drop-off site.
Bottle caps (metal)	Place into tin can and pinch top of the can closed where the bottle caps cannot spill out and place pinched can into recycling cart. Do not put them loose into the recycling cart.
Bottles, plastic	Green Recycling cart or drop-off site. Must be rinsed out. Leave on caps. No motor oil bottles.
Boxes, cereal, frozen food, tissue, etc.	Green Recycling cart or drop-off site.
Brake fluid	Banned from curb collection and drop-off site. Take to oil drop-off sites.
Bricks	Banned from curbside collection & City drop-off sites. Use the Dane County Recycling & Disposal Directory online for a full list of options: <a href="https://landfill.countyofdane.com/recycle-locations">https://landfill.countyofdane.com/recycle-locations</a> .
Brush	See " <a href="#">Brush Collection</a> " on page 15.
Bubble wrap	Tan Refuse cart. Or check with retailer that offers plastic bag recycling if bubble wrap is acceptable in their program.
Building material	See <a href="#">page 5</a> for advice.
Bulbs, fluorescent	Banned from curb collection and drop-off site. Return to any retailer that sells fluorescent bulbs.
Bulbs, halogen	Tan Refuse cart or drop-off site. Alternative: contact local lighting stores to see if they have a recycling option.
Bulbs, incandescent	Tan Refuse cart or drop-off site. Alternative: contact local lighting stores to see if they have a recycling option.
Bulbs, LED	Recycle at drop-off site in electronics. Tan Refuse cart or drop-off site. Alternative: contact local lighting stores to see if they have a recycling option.
CO2 canisters	Do not place in green cart. Take empty containers to drop-off site and place into the metals bin. Canisters still containing pressurized gas take to Dane County Clean Sweep. Call 608-838-3212 for more information or <a href="http://www.danecountycleansweep.com">www.danecountycleansweep.com</a> .
Cameras (digital & film)	Drop-off site for Electronics Recycling or a reputable private electronics recycler. Resale options and donation opportunities may be available at camera stores and thrift shops.
Camp stove propane or isobutene canisters	Take to Dane County Clean Sweep. Visit <a href="http://www.danecountycleansweep.com">www.danecountycleansweep.com</a> for more information.
Can, aerosol - EMPTY	Green Recycling cart or drop-off site.
Can, aerosol - FULL OR PARTIALLY FULL	Banned from curb collection and drop-off site. Take to Dane County Clean Sweep. Call 608-838-3212 for more information or <a href="http://www.danecountycleansweep.com">www.danecountycleansweep.com</a> .
Can, aluminum	Green Recycling cart or drop-off site. Must be rinsed clean.
Can, steel or tin	Green Recycling cart or drop-off site. Must be rinsed clean.
Car seats	Wait for car seat recycling event. Otherwise, tan trash cart. If too big for the cart, make a large item work order. (If rigid plastic recycling returns to the Streets Division, they would be accepted after padding and straps are removed.)
Carbon monoxide detector	No fee. Electronics Recycling at drop-off site or Tan Refuse cart.
Cardboard (clean & dry)	Green Recycling cart or drop-off site. Have more cardboard than can fit into the cart? Turn to <a href="#">page 8</a> for advice.
Cardboard (stained, wet, etc.)	Cardboard that is completely saturated due to rain, or stained with food, oil, or grease belongs in the trash.
Carpet/rug	No contractor work accepted. Place small pieces into tan trash cart. Larger pieces must be rolled and bound. Rolls no longer than 8 feet in length. Needs large item work order or take to drop-off site.
Carpet padding	No contractor work accepted. Place small pieces into tan trash cart. Larger pieces must be rolled and bound. Rolls no longer than 8 feet in length. Needs large item work order or take to drop-off site.
Carton, gabletop (i.e., broth or soup containers)	Green Recycling cart or drop-off site. Must be rinsed clean.
Carton, juice	Green Recycling cart or drop-off site. Must be rinsed clean.

## DISPOSAL AND RECYCLING GUIDE

Item	Instructions
Carton, milk	Green Recycling cart or drop-off site. Must be rinsed clean.
Carton, soy milk	Green Recycling cart or drop-off site. Must be rinsed clean.
Cassettes, music	Tan Refuse cart or if reusable donate to local thrift store.
Cassette cases	Tan Refuse cart or drop-off site.
Cat litter	Tan Refuse cart or drop-off site. Must be double-bagged and sealed.
Catalogs	Green Recycling cart or drop-off site.
CDs	Donate to thrift stores or choose resale options. Tan Refuse cart at home. For data destruction purposes, take to drop-off site and place in electronics area.
CD Cases	Tan Refuse cart.
Cell phones	No fee. Banned from all curb collection. Electronics Recycling at drop-off sites.
Chainsaw	No fee. Large item work order for curbside pickup or take to drop-off site. Remove gas and oil.
Charcoal - After grilling ( <b>COLD ONLY</b> )	Double-bagged and sealed in Tan Refuse cart or drop-off site.
Chemicals - Household & Hazardous	Banned from all curb collection and drop-off site. Take to Dane County Clean Sweep. Call 608-838-3212 for more information or <a href="http://www.danecountycleansweep.com">www.danecountycleansweep.com</a> .
Christmas lights	No fee. Electronics Recycling at drop-off sites.
Christmas trees (real)	Collected curb in January as brush, weather permitting. Remove all decorations and stands.
Christmas trees (artificial)	Tan Refuse cart, large item work order for curbside pickup, or take to drop-off site. Metal pieces can be placed into metals bin at drop-off sites.
Clay flower pots (no cement)	Tan Refuse cart or drop-off site.
Coat hanger (plastic)	Tan Refuse cart. Or donate to area thrift stores that sell clothes. Do not place into the recycling.
Coat hanger (metal/wire)	Tan Refuse cart. Or donate to area thrift stores that sell clothes. Do not place into the green recycling cart. Can be taken to drop-off site and placed into the metal bin for recycling.
Clothing	Do not place into recycling cart. Donate to any of area local thrift stores or in the donation bins at the drop-off sites. Otherwise, Tan Refuse cart.
Coffee pods (single-use coffee pods, i.e., K-cups, etc.)	Tan Refuse cart or drop-off site.
Comic books	Green Recycling cart or drop-off site. Donate usable books first to any thrift store or Little Free Library (preferred).
Computer keyboard	No fee. Banned from curb collection. Take to drop-off sites for electronics recycling.
Computer monitor	Banned from curbside collection. Must take to drop-off site. For 2023, monitors will be accepted at no charge at the sites.
Computer mouse	No fee. Banned from curb collection. Take to drop-off sites for electronics recycling.
Computer tower/CPU	Banned from curbside collection. Must take to drop-off site. For 2023, monitors will be accepted at no charge at the sites.
Concrete	Banned from curbside collection & City drop-off sites. Use the Dane County Recycling & Disposal Directory online for a full list of options: <a href="https://landfill.countyofdane.com/recycle-locations">https://landfill.countyofdane.com/recycle-locations</a> .
Concrete sink	Large Item curb collection or drop-off sites.
Cooking oil	Cooking Oil recycling at drop-off sites.
Copy machine (commercial, office size)	\$35 fee. Large item work order for curbside pickup or drop-off site.
Corks (from wine bottles, etc.)	Refuse cart or check with local liquor stores to see if they participate in cork recycling. Also check websites for Cork Club and ReCORK for more recycling options.
Couch (sofa, loveseat, davenport, etc.)	Large item work order for curbside pickup or drop-off site. Also, consider donating ones that can be used again.
CPAP machines	The facemask and hose go into the trash. The machine itself (and the cord) can be recycled in the electronics bin at the drop-off site.
Cups, aluminum	Empty and try and put in the recycling cart. Much better choice than plastic cups. Good job using these!
Cups, paper	Empty and dry put in Green Recycling cart. Unused, also recycle them. Best choice: reusable cups.
Cups, plastic	Only #1, #2, and #5 plastic cups are recyclable. Must be clean and dry. Better choice: aluminum or paper cups. Best choice: reusable cups.
Curling iron	Recycle with electronics at the drop-off sites or send to the landfill in the Tan Refuse cart.
Cutlery (forks, spoons, etc)	Donate to thrift store if usable. Tan Refuse cart at the curb. Metals bin at drop-off site if mostly metal. Do not place into Green Recycling cart.
Dairy tubs & lids	Green Recycling cart or drop-off site. Must be rinsed clean.
Deer carcass	Tan Refuse cart. Double-bag it.
Dehumidifiers	\$35 fee. Large item work order for curbside pickup or drop-off site.
Deli containers & lids	Green Recycling cart or drop-off site. Must be rinsed clean.
Desktop printer/copy/scanner	No fee. Banned from curb collection. Electronics Recycling at drop-off sites.
Dipping sauce takeout containers	Trash. They're too small for the recycling. Their lids are trash, too.
Dirt	Banned from curbside collection & City drop-off sites. Use the Dane County Recycling & Disposal Directory online for a full list of options: <a href="https://landfill.countyofdane.com/recycle-locations">https://landfill.countyofdane.com/recycle-locations</a> .
Dishwasher	\$35 fee. Large item work order for curbside pickup or drop-off site.
Dog waste	Bag it and place into Tan Refuse cart at your home. Alternative: use waste station at designated dog parks. Do not put it public litter containers. And please do not put it in your neighbors' refuse cart while passing by on a walk—this is rude.
Drain cleaner	Banned from curb collection and drop-off sites. Take to Dane County Clean Sweep, 608-838-3212, <a href="http://www.danecountycleansweep.com">www.danecountycleansweep.com</a> .
Drill bits	Recycle in metals bin at drop-off site.
Driveway sealer - dried solid	Tan Refuse cart or drop-off site.
Driveway sealer - liquid/solvent based	Banned from curb collection and drop-off site. Take to Dane County Clean Sweep. Call 608-838-3212 for more information or <a href="http://www.danecountycleansweep.com">www.danecountycleansweep.com</a> .
Dryers	\$35 fee. Large item work order for curbside pickup or drop-off site.

## DISPOSAL AND RECYCLING GUIDE

Item	Instructions
Drywall	No contractor work accepted. Small amounts from homeowner can go into trash. Large item work order for collection of larger amounts. Follow building material guidelines on <a href="#">page 5</a> .
DVDs	Donate to thrift stores or choose resale options. Tan Refuse cart at home. For data destruction purposes, take to drop-off site and place in electronics area.
DVD Cases	Tan Refuse cart.
DVD players	No fee. Banned from curb collection. Electronics Recycling at drop-off sites.
DVRs	No fee. Banned from curb collection. Electronics Recycling at drop-off sites.
e-Bike battery	Area bicycle dealers may offer an e-bike takeback program. Find these locations at <a href="http://www.call2recycle.org/e-bikes">www.call2recycle.org/e-bikes</a> .
Egg cartons, paper	Green Recycling cart or drop-off site.
Egg cartons, styrofoam	Styrofoam Recycling at drop-off site (preferred) or Tan Refuse cart.
Egg carton, plastic	Cartons containing multiple dozens of eggs are likely too rigid or brittle for recycling. The clear plastic cartons for a single dozen are likely okay. Packaging will vary. Check the plastic recycling guidelines on <a href="#">page 10</a>
Envelopes	Green Recycling cart or drop-off site. The plastic window on certain envelopes is okay to leave on the envelope when they are placed into the cart.
Envelopes, padded	Tan Refuse cart or drop-off site.
E-readers (Kindles, etc.)	No fee. Banned from curb collection. Electronics Recycling at drop-off site.
Exercise equipment (stationary bikes, rowing machines, etc.)	No fee. Large item work order for curbside pickup or take drop-off site. Also, consider reselling if in good condition.
Evergreen ropes	Tan Refuse cart or drop-off site.
Explosives	Banned from curb collection and drop-off site. Contact the Dane County Non-Emergency Number at 608-255-2345 for disposal.
Extension cords	Electronics Recycling at drop-off site.
External hard drives	No fee. Banned from curb collection. Electronics Recycling at drop-off sites.
Fax machines	No fee. Banned from curb collection. Electronics Recycling at drop-off sites.
Fencing (wood, chain link, chicken wire, etc)	No fee. Large item work order for curbside pickup or take drop-off site. Remove concrete from fence posts.
Fertilizer without herbicide or pesticide	Tan Refuse cart or drop-off site.
Fertilizer with herbicide or pesticide	Banned from curb collection and drop-off site. Take to Dane County Clean Sweep. Call 608-838-3212 for more information or <a href="http://www.danecountycleansweep.com">www.danecountycleansweep.com</a> .
Fire extinguishers	Banned from curb collection and drop-off site. Take to Dane County Clean Sweep or contact any of the following for disposal options: Jefferson Fire & Safety (608-836-0068); Cintas (608-241-1993); Summit Fire Protection (608-276-9553).
Firewood	Small amounts can be collected during brush pickup. See <a href="#">page 15</a> for details.
Fireworks	Banned from curb collection and drop-off site. Contact the Dane County Non-Emergency Number at 608-255-2345 for disposal.
Flammable fluids	Banned from curb collection and drop-off site. Take to Dane County Clean Sweep. Call 608-838-3212 for more information or <a href="http://www.danecountycleansweep.com">www.danecountycleansweep.com</a> .
Flash drives, thumb drives, etc.	No fee. Banned from curb collection. Electronics Recycling at drop-off sites.
Flower pots (clay)	Tan Refuse cart.
Flower pots (rigid or unknown plastic)	Tan Refuse cart.
Flower pots (#1, #2, #5 plastic)	If the pot is clean and dry and no larger than the size of a gallon of milk, it's okay for the recycling cart if it is made from #1, #2, or #5 plastic. If you can't tell or don't know, then throw it into the trash.
Fluorescent bulbs & tubes	Banned from curb collection and drop-off sites. Return to any retailer that sells them or check with a local lighting store.
Fluorescent light fixtures	\$15 fee. Large item work order for curbside pickup or drop-off site.
Freezer	\$35 fee. Large item work order for curbside pickup or drop-off site.
Frozen food boxes	Green Recycling cart or drop-off site.
Furnace	\$35 fee. Large item work order for curbside pickup or drop-off site.
Furniture	No fee. Large item work order for curbside pickup or take drop-off site.
Gaming systems (Xbox, Playstation, etc)	No fee. Electronics Recycling at drop-off sites.
Garden hoses	Tan Refuse cart or drop-off site.
Garlands	Tan Refuse cart or drop-off site.
Garlic mustard	Tan Refuse cart—bagged and labeled.
Gas & oil mixture	Take to Dane County Clean Sweep. Do not dispose of in motor oil drop-off sites. More Clean Sweep info can be found at <a href="http://www.danecountycleansweep.com">www.danecountycleansweep.com</a> .
Gas can	Must be COMPLETELY empty, dry, and aired out. Tan Refuse cart.
Gasoline	Banned from curb collection and drop-off site. Take to Dane County Clean Sweep. Call 608-838-3212 for more information or <a href="http://www.danecountycleansweep.com">www.danecountycleansweep.com</a> .
Glass, mirrors, dishes, drinking glasses, etc.	Tan Refuse cart, Large Item curb collection (if doesn't fit) or drop-off site.
Glass, bottles	Green Recycling cart or drop-off site. Must be rinsed clean.
Glass, broken (not jars or bottles)	Tan Refuse cart. Do not need to place it into a bag or box.
Glass, jars	Green Recycling cart or drop-off site. Must be rinsed clean.
Glass, windows	Do not place in recycling. No contractor work accepted. Large item work order for curbside pickup or drop-off site.
Grass clippings	Take to drop-off site for yard waste. Will be collected during yard waste collection times. Learn more on <a href="#">page 17</a> . Best choice: mulch the clippings in your lawn.
Grill, charcoal	No fee. Large item work order for curbside pickup or drop-off site.
Grill, gas	\$15 fee. Large item work order for curbside pickup or drop-off site.

## DISPOSAL AND RECYCLING GUIDE

Item	Instructions
Hair dryers (handheld)	Recycle at drop-off site in electronics bin or send to landfill in the Tan Refuse cart at the curb.
Helium tank	Drop-off site ONLY. MUST be empty with valve open.
Hide-a-bed sofa (pullout bed, etc.)	No Large item work order for curbside pickup or drop-off site.
Hot tubs	\$35 fee. Large item work order for curbside pickup or drop-off site. If time machine, consult repairman.
Household chemicals	Banned from curb collection and drop-off site. Take to Dane County Clean Sweep. Call 608-838-3212 for more information or <a href="http://www.danecountycleansweep.com">www.danecountycleansweep.com</a> .
Humidifier	Electronics Recycling at drop-off site (preferred) or Tan Refuse cart or Large Item curb collection.
Ice cream carton (paper; i.e., traditional half-gallon or pint ice cream containers)	Tan Refuse cart.
Infectious waste	Contact Madison Dane County Public Health at 608-266-4821. Not acceptable in any Streets Division collections.
Inhalers	Banned from curb collection and drop-off site. Take to any Med Drop locations. For Med Drop locations visit <a href="https://safercommunity.net/meddrop">https://safercommunity.net/meddrop</a> .
Jack-o-lantern	Take to yard waste drop-off sites. Curb collection ONLY during Spring and Fall leaves/yard waste collection periods. Do not store material on terrace until collection period.
Jar lids, metal	Green Recycling cart or drop-off site (remove from jar). Must be rinsed clean.
Jar lids, plastic	Place back onto container firmly and recycle the container and the lid. If separate from the container, place into trash.
Junk mail, including envelopes	Green Recycling cart or drop-off site.
Knives (steak, kitchen, etc.)	Donate to thrift store if usable. Tan Refuse cart at the curb. Metals bin at drop-off site if mostly metal. Do not place into Green Recycling cart.
Laptop computer	Banned from curbside collection. Must take to drop-off site. For 2023, monitors will be accepted at no charge at the sites.
Lawn edgers	No fee. Large item work order for curbside pickup or take drop-off site. Remove gas and oil.
Lawn mower	\$15. Large item work order for curbside pickup or take drop-off site. Remove gas and oil.
Leaves	Take to yard waste drop-off sites. Curb collection ONLY during Spring and Fall leaves/yard waste collection periods. Do not store material on terrace until collection period.
Lightbulbs - Incandescent	Tan Refuse cart. May be recycled at a specialty lighting store.
Lightbulbs - LED	Tan Refuse cart. Can be recycled with electronics at Streets Division drop-off sites at no charge. Specialty lighting stores may also accept them.
Lightbulbs - Halogen	Tan Refuse cart. May be recycled at a specialty lighting store.
Lightbulbs - CFL or other fluorescents	Banned from trash and recycling carts. Return to a retailer that sells them for recycling like all other fluorescent tubes.
Luggage	Donate if usable. Tan Refuse cart if not. Too big for cart? Large item work order for curbside pickup or take drop-off site.
Lumber, boards, wood, etc.	No contractor work accepted. Short pieces into Tan Refuse cart. Larger amounts for curbside pickup make a work order, or take to drop-off site. Follow Building Material guideline on <a href="#">page 5</a> .
Magazines	Green Recycling cart or drop-off site.
Mattress	No fee. Large item work order for curbside pickup or take drop-off site.
Medical sharps (needles, lancets, EpiPen, syringes, etc.)	Banned from curb collection and drop-off sites. Take to pharmacy. Call your pharmacy first to be sure they accept them & learn if there are special packaging requirements. Speak to the actual pharmacist, not a retail clerk.
Medical waste	Banned from curb collection and drop-off site. Contact the Department of Health: 608-266-4821.
Medication	Banned from curb collection and drop-off site. Take to a Med-Drop. For locations, visit: <a href="https://safercommunity.net/meddrop">https://safercommunity.net/meddrop</a> .
Mercury - anything	Banned from curb collection and drop-off site. Take to Dane County Clean Sweep. Call 608-838-3212 for more information or <a href="http://www.danecountycleansweep.com">www.danecountycleansweep.com</a> .
Microwave	\$15 fee. Large item work order for curbside pickup or drop-off site.
Modems	No fee. Banned from curb collection. Electronics Recycling at drop-off sites.
Motor oil	Banned from collection. Take to motor oil drop-off sites. For additional information turn to <a href="#">page 20</a> .
Motor oil bottles	Tan Refuse cart.
Motor oil filters	Banned from curb collection and drop-off site. Take to oil drop-off sites.
MP3 player	No fee. Electronics Recycling at drop-off sites.
Nails/screws	Recycle at drop-off sites in metals bin or place into tin can and pinch the can closed where contents cannot spill out and place pinched can into recycling cart. Do not put them loose into the recycling cart.
Neon lights	Contact PKK Lighting at 608-836-7821 or contact the Streets Division for options.
Ovens	\$35 fee. Large item work order for curbside pickup or drop-off site.
Oxygen tank	Drop-off site ONLY. MUST be empty with valve open.
Packing peanuts (Styrofoam)	Tan Refuse cart or drop-off site. Not recycled with Styrofoam.
Paint remover	Banned from curb collection and drop-off site. Take to Dane County Clean Sweep. Call 608-838-3212 for more information or <a href="http://www.danecountycleansweep.com">www.danecountycleansweep.com</a> .
Paint, dried solid	WITH lids off Tan Refuse cart or drop-off sites.
Paint, liquid latex	If <b>less than 1/2 full</b> , add kitty litter and paint hardener, let dry, then dispose as noted in "Paint, dried solid." If <b>more than 1/2 full</b> take to Dane County Clean Sweep 608-838-3212 for more information or <a href="http://www.danecountycleansweep.com">www.danecountycleansweep.com</a> .
Paint, oil or solvent-based	Banned from curb collection and drop-off site. Take to Dane County Clean Sweep. Call 608-838-3212 for more information or <a href="http://www.danecountycleansweep.com">www.danecountycleansweep.com</a> .
Pallets	No fee. Large item work order for curbside pickup or take drop-off site. Pallets cannot be larger than 4' x 4'. Limit 5 at a time.
Paper	Green Recycling Cart or drop-off site. This includes newspaper, stationary, copy/office paper, packing paper, computer paper, and similar paper products.
Paper shredder	Electronics recycling at drop-off site or Tan Refuse cart
PE Foam (soft foam for electronics packaging-not Styrofoam)	For recycling contact Reynolds Polyurethane Recycling at (608) 906-4244 or online at <a href="http://www.reynoldsurethanerecycling.com">www.reynoldsurethanerecycling.com</a> . If cannot be recycled, place into Tan Refuse cart.

## DISPOSAL AND RECYCLING GUIDE

Item	Instructions
Pesticides	Banned from curb collection and drop-off site. Take to Dane County Clean Sweep. Call 608-838-3212 for more information or <a href="http://www.danecountycleansweep.com">www.danecountycleansweep.com</a> .
Pet waste	Tan Refuse cart or drop-off site. <b>MUST</b> be bagged. <b>DO NOT</b> put it into litter carts or the cart of another resident.
Phone books	Green Recycling cart or drop-off site.
Phones (all kinds)	Electronics Recycling at drop-off site.
Photographs	Tan Refuse cart or drop-off site.
Pianos	No fee. Large item work order for curbside pickup or take drop-off site.
Pizza Box	Food/grease stained parts go into Tan Refuse cart; clean parts (like the lid) go into Green Recycling cart.
Plastic bottles and jugs	Green Recycling cart or drop-off site. Please rinse them out.
Plastic shell/plastic security packaging	Green Recycling cart or drop-off site. This packaging includes the hard to open sealed plastic packaging around many items including electronics.
Plastic bags & film	Return to a retailer in their plastic bag recycling program. Best choice is to avoid creating this waste whenever possible.
Poles (metal, wood, other)	No fee. Must be shorter than 8 feet. Must remove concrete. Large item work order for curbside pickup or take drop-off site.
Pots & pans	Green Recycling cart or drop-off site.
Pots & pans with ceramic non-stick coating	Tan Refuse cart or drop-off site. Ceramic coated pans are not acceptable in the recycling.
Pots & pans with non-stick coating	Green Recycling cart or drop-off site.
Power steering fluid	Banned from curb collection and drop-off site. Take to oil drop-off sites.
Power strips	Like extension cords, Christmas tree lights, and other similar corded electronics. Take to drop-off site and place with other electronics area for recycling. Do not place in recycling cart at home. No fee.
Power washer	No fee. Large item work order for curbside pickup or take drop-off site.
Prescription bottles (plastic)	In order for empty prescription bottles to be recycled in the Green Recycling cart, they must be at least three inches tall and the lids should be one. Shorter bottles belong in the trash.
Pressurize tanks - not empty	Banned from curb collection and drop-off site. Take to Dane County Clean Sweep. Call 608-838-3212 for more information or <a href="http://www.danecountycleansweep.com">www.danecountycleansweep.com</a> .
Pressurized tank, 1-pound propane tank	Take to Dane County Clean Sweep. Visit <a href="http://www.danecountycleansweep.com">www.danecountycleansweep.com</a> for more information.
Pressurized tank, 20-pound propane tank	Metal Recycling at drop-off site. <b>MUST BE EMPTY</b> with valve open.
Pressurized tanks, 5 pounds and higher	Metal Recycling at drop-off site. <b>MUST BE EMPTY</b> with valve open.
Printer	No fee. Banned from curb collection. Take to drop-off sites for electronics recycling.
Printer cartridge	No fee. Electronics Recycling at drop-off sites. Many cartridge brands and electronics stores (i.e., Best Buy, Staples, etc.) also offer recycling services.
Railroad ties	No fee. Large item work order for curbside pickup or take drop-off site.
Rain barrels	No fee. Large item work order for curbside pickup or take drop-off site.
Rain gutters	No fee. Large item work order for curbside pickup or take drop-off site.
Ranges	\$35 fee. Large item work order for curbside pickup or drop-off site.
Raspberry canes	Take to yard waste drop-off sites. Curb collection <b>ONLY</b> during Spring and Fall leaves/yard waste collection periods. Do not store material on terrace until collection period.
Refrigerator (more than 50 pounds)	\$35 fee. Large item work order for curbside pickup or drop-off site.
Refrigerator (less than 50 pounds)	\$15 fee. Large item work order for curbside pickup or drop-off site.
Rigid plastic	Tan Refuse cart or large item collection. Includes plastic trashcans, laundry baskets, storage tubs, toys, plastic pails/buckets, lawn furniture, flower pots, milk crates, etc.
Rocks	Banned from curbside collection & City drop-off sites. Use the Dane County Recycling & Disposal Directory online for a full list of options: <a href="https://landfill.countyofdane.com/recycle-locations">https://landfill.countyofdane.com/recycle-locations</a> .
Root ball	No material from contractor work accepted. Remove all dirt. Curb collection available only during brush collection window. Can also use drop-off sites (one load a day). Do not store on terrace. See " <a href="#">Brush Collection</a> " on page 15.
Rosebush canes	Take to yard waste drop-off sites. Curb collection <b>ONLY</b> during Spring and Fall leaves/yard waste collection periods. Do not store material on terrace until collection period.
Routers (for wireless internet)	No sticker fee. Banned from curb collection. Electronics Recycling at drop-off sites.
Sand (clean)	Like dirt and other fill material this is not allowed in curbside collection. Take to a local quarry or haul to Dane County Landfill.
Sand (from winter)	Leftover sand from the winter can be held onto to use again next winter. If this is not an option for your home, contact the Streets Division.
Sawdust	No contractor work accepted. Place dry sawdust into airtight bag and into tan trash cart.
Screws/nails	Recycle at drop-off sites in metals bin or place into tin can and pinch the can closed where contents cannot spill out and place pinched can into recycling cart. Do not put them loose into the recycling cart.
Shingles	Banned from curb collection and drop-off site. Take to Dane County Landfill for recycling or another reputable shingle recycler. See <a href="https://pwht.countyofdane.com/recycle/categories.aspx">https://pwht.countyofdane.com/recycle/categories.aspx</a> .
Shoes	Place in clothing bins at drop-off sites. Please bind the pair of shoes together.
Shredded paper	Place into clear plastic bag then tie completely shut. Full bags must not be larger than a basketball. The appropriately bagged shredded paper into the recycling cart.
Sinks	No fee. Large item work order for curbside pickup or take drop-off site.
Smart phones	No sticker fee. Banned from curb collection. Electronics Recycling at drop-off sites.
Smoke alarms/detectors	Tan Refuse cart. Some brands can be mailed back to manufacturer for recycling. Check with manufacturer for more info.
Snow blowers/throwers	\$15. Large item work order for curbside pickup or take drop-off site. Remove gas and oil.
Sod	Banned from curbside collection. Maximum of five 5-gallon buckets can be accepted at the drop-off sites with yard waste. Remove as much dirt as possible from the sod. Too much dirt and it will not be accepted. For larger volumes, contact the Dane County Landfill or a reputable composter.

## DISPOSAL AND RECYCLING GUIDE

Item	Instructions
Space heater (electric)	No fee. Large item work order for curbside pickup or take drop-off site.
Space heater (fuel/oil)	No fee. Large item work order for curbside pickup or take drop-off site. Remove oil if possible.
Speakers - computer	No fee. Banned from curb collection. Electronics Recycling at drop-off sites.
Speakers - stereo equipment	No fee. Electronics Recycling at drop-off sites or landfilled as refuse item.
Stone	Banned from curbside collection & City drop-off sites. Use the Dane County Recycling & Disposal Directory online for a full list of options: <a href="https://landfill.countyofdane.com/recycle-locations">https://landfill.countyofdane.com/recycle-locations</a> .
Stove	\$35 fee. Large item work order for curbside pickup or drop-off site.
Straw erosion control matting	Most straw matting will biodegrade over time. If you remove it, place into trash because the biodegradable string that holds it together is not accepted by the City's composter.
Styrofoam, molded (bulky packaging)	Take to drop-off site for recycling. Do not place into green recycling cart at the curb. Otherwise Tan Refuse cart for landfilling.
Styrofoam, sheets (often included with electronics purchases)	Tan Refuse cart. Not appropriate for Styrofoam recycling at drop-off sites. Do not place into recycling cart – even if the sheet has a recycling triangle on it.
Styrofoam, take-out containers	Tan Refuse cart if stained with food. Completely clean & dry can be recycled at drop-off sites. Do not place into green recycling cart.
Surge protectors	No fee. Electronics Recycling at drop-off sites or landfilled as a refuse item.
Swing set	Dismantle into pieces that are shorter than 8' long. Remove concrete. No fee. Large item collection curbside with work order or take to drop-off site.
Tablet computers	No fee. Banned from curb collection. Electronics Recycling at drop-off sites.
Take-out containers (paper, no wax)	Food/grease stained parts go into the Tan Refuse cart; clean parts go into the Green Recycling cart.
Take-out containers (paper, waxy film; i.e., Chinese takeout boxes)	Tan Refuse cart.
Take-out containers (plastic)	If clean of food, grease, and stains, and if the container is a #1 through #7 it can be recycled.
Tanning beds	\$35 fee. Large item work order for curbside pickup or drop-off site.
Telephone books	Green Recycling cart.
Televisions	Banned from curbside collection. Must take to drop-off site. For 2023, monitors will be accepted at no charge at the sites.
Tetrapak	Green Recycling cart. Should be rinsed out.
Thermometers - mercury	Banned from curb collection and drop-off site. Take to Dane County Clean Sweep. Call 608-838-3212 for more information or <a href="http://www.danecountycleansweep.com">www.danecountycleansweep.com</a> .
Thermostats - mercury	Banned from curb collection and drop-off site. Take to Dane County Clean Sweep. Call 608-838-3212 for more information or <a href="http://www.danecountycleansweep.com">www.danecountycleansweep.com</a> .
Tires	\$5 fee apiece for tires off rim. \$10 fee apiece for tires on rim or large truck tires. Large item collection curbside with work order or take to drop-off site.
Toilets	No fee. Large item work order for curbside pickup or take drop-off site. Or bust it up and place into the trash cart.
Toothpaste tubes	Trash. Some popular brands do advertise their tubes can be recycled, but they are not accepted in our system.
Top soil	Banned from curb collection. Maximum of a 5-gallon bucket at drop-off sites. Larger volume must be hauled to the Dane County Landfill or another private entity that accepts fill material.
Transmission fluid	Banned from curb collection and drop-off site. Take to oil drop-off sites.
Trash compactor	\$35 fee. Large item work order for curbside pickup or drop-off site.
Uninterruptible power supply & battery	The lead acid battery from a UPS must be recycled. Take to a drop-off site or other lead acid battery recycler.
Vacuum cleaner dust	Tan Refuse cart or at drop-off site. Double bagged.
Vacuums (traditional & robotic)	Electronics recycling at drop-off sites (preferred) or Tan Refuse cart at home.
VCRs	No fee. Banned from curb collection. Electronics Recycling at drop-off sites.
VHS tapes	Donate to thrift stores or choose other resale options if applicable. Tan Refuse cart at home. Can be placed in electronics containers at drop-off site.
Vines (grape, ivy, etc.)	Take to yard waste drop-off sites. Curb collection ONLY during Spring and Fall leaves/yard waste collection periods. Do not store material on terrace until collection period.
Washing machine	\$35 fee. Large item work order for curbside pickup or drop-off site.
Water cooler	\$35 fee. Large item work order for curbside pickup or drop-off site.
Water heater	\$35 fee. Large item work order for curbside pickup or drop-off site.
Water softener	\$35 fee. Large item work order for curbside pickup or drop-off site.
Web cameras	No fee. Banned from curb collection. Electronics Recycling at drop-off sites.
Weeds	Take to yard waste drop-off sites. Curb collection ONLY during Spring and Fall leaves/yard waste collection periods. Do not store material on terrace until collection period.
Weed whacker / Weed Eater	No fee. Large item work order for curbside pickup or take drop-off site. Remove gas & oil.
Wheelchair (motorized & manual)	Contact primary care provider for possible donation opportunities. If no donation option is available, these will be collected as a large item at the curb or at the drop-off site. No fee for this item.
Windows	No contractor work accepted. Glass portions must be taped to help contain breakage. Maximum of 10 windows at one time. For curbside pickup, make a large item work order, or take to drop-off site. If in good condition, donate to Habitat for Humanity Restore.
Wood chips (mulch)	RESIDENTS: Remove dirt. Take to drop-off site for either brush or yard waste. No dirt will be accepted. CONTRACTORS: Take to Brush Processing Center.
Wrapping paper - with foil	Tan Refuse cart or drop-off site.
Wrapping paper - no foil	Green Recycling cart or drop-off site.
Wreaths	Tan Refuse cart or drop-off site.
Yard waste	Take to yard waste drop-off sites. Curb collection ONLY during Spring and Fall leaves/yard waste collection periods. Do not store material on terrace until collection period.



## STREETS DIVISION INFORMATION

### Phone Numbers:

- » East Office: 608-246-4532
- » West Office: 608-266-4681
- » Urban Forestry: 608-266-4816
- » Recycling Coordinator: 608-267-2626
- » Brush Processing and Mulch Center: 608-266-4911
- » Brush & Yard Waste Hotline: 608-267-2088
- » Winter Parking Hotline: 608-261-9111
- » Resource Recovery/Urban Forestry Special Charge Hotline: 608-243-5899

### Other Important Numbers:

- » **Beltline, and Beltline on/off ramp, and State Highway issues:**  
Contact Dane County Highway at 608-266-4261.
- » **City parks refuse, recycling, or lost items:**  
Contact the Parks Division at 608-266-4711.
- » **Dead animal collection from City right of way:**  
Contact the Engineering Services Division at 608-266-4430.
- » **Ordinance violations such as not shoveling the sidewalk, inadequate lawn maintenance, or improper collection cart usage or storage:**  
Contact the Building Inspection Division at 608-266-4551.
- » **Paint or other hazardous chemical disposal:**  
Contact Dane County Clean Sweep at 608-838-3212.
- » **Parking regulations:**  
Contact Parking Enforcement at 608-266-4624.
- » **Sidewalk repair or replacement:**  
Contact the Engineering Services Division at 608-266-4430.
- » **State Street litter containers or lost items:**  
Contact Mall/Concourse at 608-266-6031.
- » **Storm drains blocked or repairing manhole covers:**  
Contact the Engineering Services Division at 608-266-4430.
- » **Street reconstruction projects:**  
Contact the Engineering Division at 608-266-4751.
- » **Traffic lights, traffic signs, curb or street markings/painting, or street lights:**  
Contact Traffic Engineering Division at 608-266-4761.
- » **Water main breaks:**  
Contact the Water Utility at 608-266-4661.

### Want to report the problem online instead of calling?

Go to [www.cityofmadison.com/reportaproblem](http://www.cityofmadison.com/reportaproblem) and use the online form to share your question, comment, concern, or request with City staff.