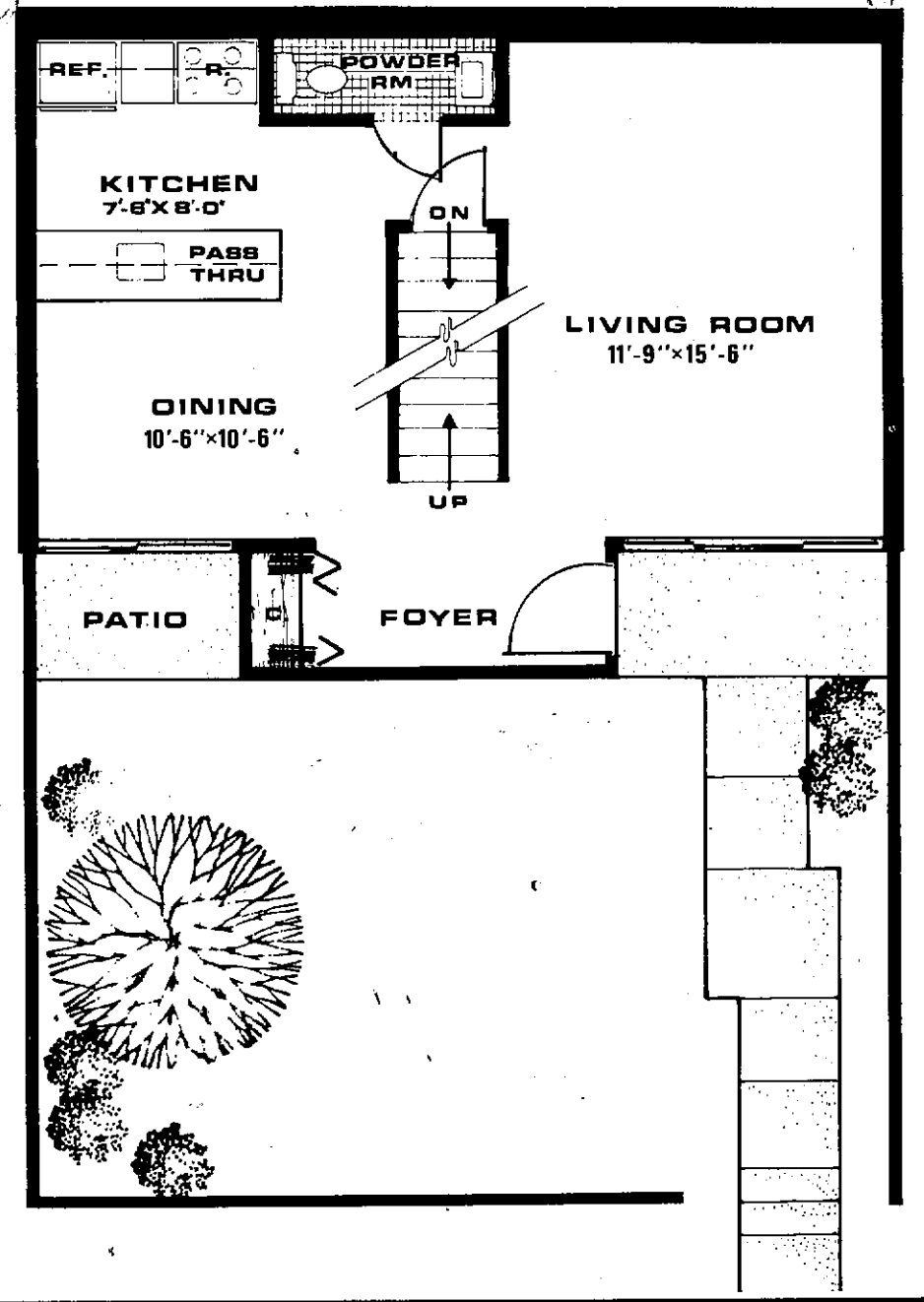


THREE BEDROOM UNIT



TWO BEDROOM UNIT

FIRST FLOOR

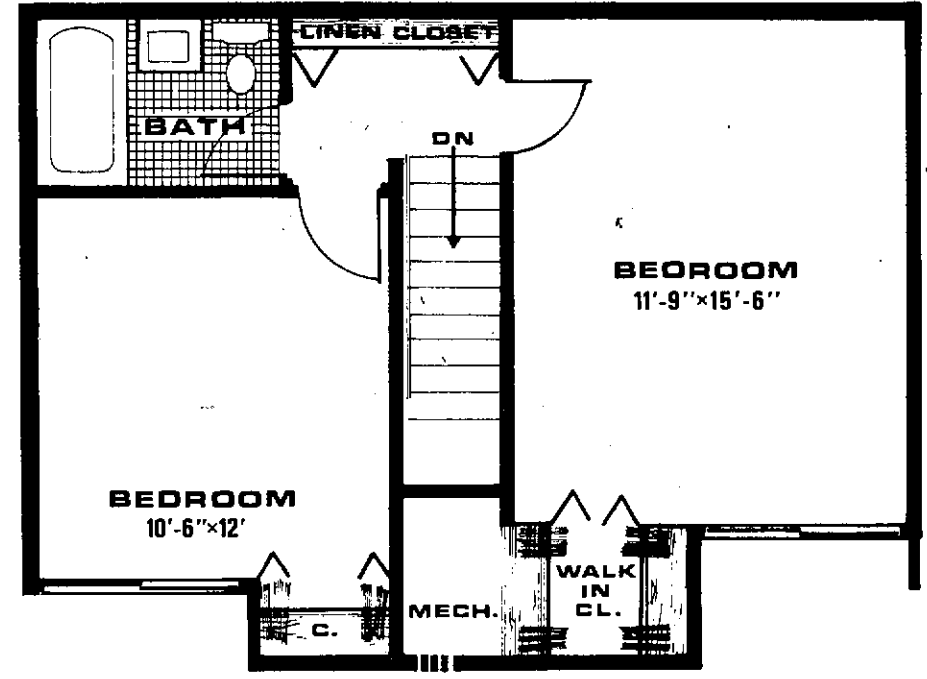
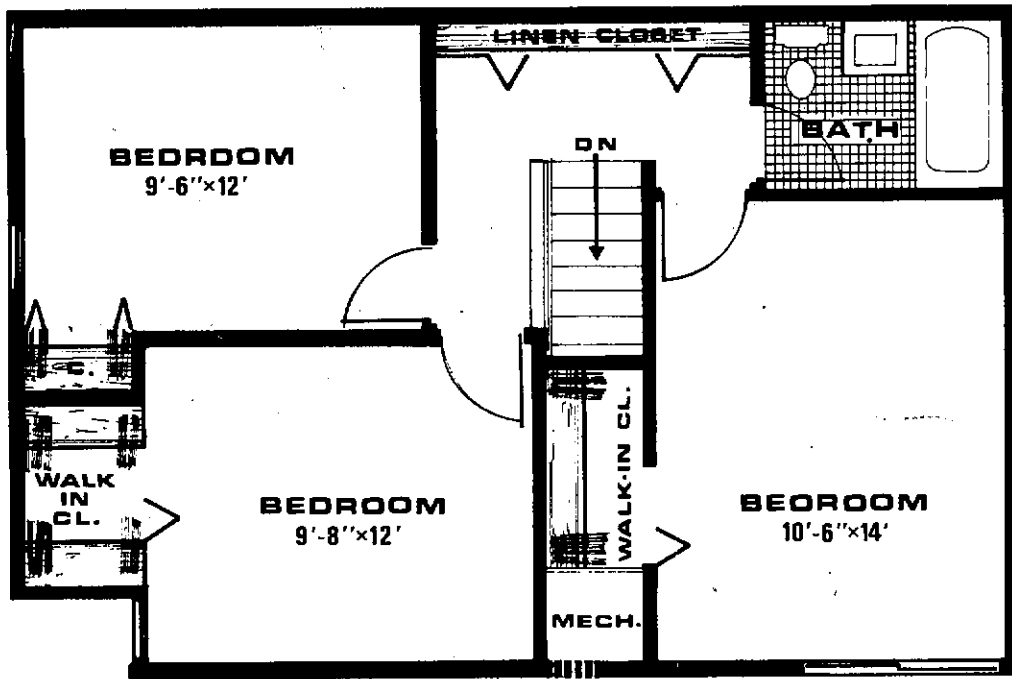
Specifications and dimensions in this brochure are approximate and subject to construction variances. Builder retains the right to make changes as a continuing program of product improvement.

EastBluff

TOWNHOME APARTMENTS

Each EastBluff Townhouse Home includes:

- Your own private entrance, patio, garden area, and fenced-in yard.
- Full basement with double-tub facilities, water softener and recreation room area.
- Large entry foyer with roomy guest closet.
- Carpeting or vinyl tile on stairway and floors.
- Time-saver kitchen features, pass-thru counter to dining area and insulated sliding glass patio doors overlooking your garden area and yard.
- Frigidaire electric range and frost-free, two-door refrigerator with 126 lb. freezer.
- Garbage disposal for step-saving convenience.
- Extra roomy cabinets; storage and closet space aplenty.
- Maintenance free ceramic tile in master bath.
- All bedrooms have spacious wardrobe facilities; some with walk-in closets.
- Your own year-round combined Climatrol temperature control unit.
- Parking provided near your front door with extra space available if needed.



SECOND FLOOR

THREE BEDROOM UNIT

TWO BEDROOM UNIT